

## Quarterly Activities Report – 30 June 2021

Tesoro Resources Limited (ASX: TSO) (**Tesoro** or the **Company**) is pleased to provide the following activities report that outlines progress achieved during the June 2021 Quarter.

### HIGHLIGHTS

- Tesoro completes record drilling at the El Zorro Gold Project (**El Zorro**) during the June quarter, **58 holes** completed for **19,325 metres**.
- Assay results received for 31 holes, including initial results from the Ternera East discovery.
- New gold discovery at Ternera East within the hanging wall zone of the Ternera Gold Deposit returned positive first drill results:
  - **ZDDH0149**
    - 21.28m @ 0.34g/t Au from 97.50m including:
    - 4.50m @ 1.14g/t Au from 105.00m; and
    - 36.00m @ 0.40g/t Au from 243.00m including:
    - 4.00m @ 1.69g/t Au from 249.00m; and
    - 1.05m @ 1.77g/t Au from 272.95m.
  - Hole **ZDDH0149** expands the drilled Ternera Gold System approximately 500m to the east and demonstrates potential for additional gold mineralisation outside of Ternera.
  - A second hole at Ternera East (ZDDH0166) has intercepted gold host rocks up to 100m thick, assays pending.
  - Significant intercepts reported during the June Quarter include:
    - **ZDDH0128**
      - 0.91m @ 7.59g/t Au from 78.29m; and
      - 7.00m @ 3.22g/t Au from 103.00m.
    - **ZDDH0131**
      - 25.00m @ 2.11g/t Au from 119.00m including:
      - 0.59m @ 63.10g/t Au from 120.00m; and
      - 1.00m @ 38.30g/t Au from 176.00m.
    - **ZDDH0135**
      - 12.00m @ 3.34g/t Au from 334.00m including:
      - 1.50m @ 25.22g/t Au from 334.00m.
    - **ZDDH0133**
      - 27.00m @ 1.18g/t Au from 267.00m including:
      - 8.00m @ 3.17g/t Au from 267.00m.
    - **ZDDH0136**
      - 107.00m @ 0.49 /t Au from 239.00m including:
      - 37.00m @ 1.01g/t Au from 287.00m.
- In total, Tesoro has completed 190 diamond drillholes at El Zorro for 58,555 metres.
- Assays remain outstanding for 57 diamond drill holes.
- Ternera gold mineralisation remains open in all directions and drilling continues, with six drill rigs operating 24/7.

- Resource modelling is well advanced in preparation for an initial Maiden Resource Estimate (**MRE**) at El Zorro, with a further Resource Estimate expected to be released during the September 2021 quarter.
- Approximately 550 kilograms of metallurgical testwork samples have been collected from drill cores and received by the laboratory for detailed metallurgical testwork.
- Preliminary permitting activities and project studies are advancing to assess the mining potential at El Zorro.
- Tesoro continues to efficiently deploy capital with approximately 93% of cash deployed during the quarter attributed directly to exploration and development costs (approx. 90% YTD).
- The Company remains well funded, with cash balance of approximately \$13.73 million as at 30 June 2021.

## Overview

Tesoro holds interests in the highly prospective El Zorro gold exploration project located within the Coastal Cordillera of Chile. El Zorro is favourably located and demonstrates significant scale and gold grades.

Tesoro is focussed on delineating gold resources at El Zorro, where drilling continued during the quarter to further define the Ternera Gold Deposit and undertake initial drill testing of the Ternera East target. During the quarter, 58 holes were completed for 19,325 metres, the most metres completed by Tesoro at El Zorro in a quarter since drilling commenced in February 2020. Assay results were received for 31 holes with assays outstanding for 57 holes as at period end.

## Ternera East Prospect

Hole ZDDH0149 is the first of two holes drilled to test the newly discovered Ternera East Target at El Zorro. Assay results for ZDDH0149 were given priority through the laboratory to allow rapid planning of additional drilling. The second hole, ZDDH0166, is awaiting assays.

Ternera East was initially identified from geological mapping, sampling and geophysics which identified multiple outcropping bodies of the El Zorro Tonalite (**EZT**), the favourable gold host rock at El Zorro.

Hole ZDDH0149 intercepted multiple small tonalite bodies up to 20m wide, with two zones of gold mineralisation returned. An occurrence of visible gold was noted during logging at 252.00m down hole. This gold mineralisation is significant as it verifies that the EZT remains well mineralised outside of the Ternera Gold Deposit, providing significant scope to define additional gold resources at El Zorro. Furthermore, the newly discovered mineralised EZT bodies occur within the hanging wall zone of the main Ternera Deposit providing potential to enhance the mining economics of any potential open pit mining operation through a reduced stripping ratio.

An additional hole, ZDDH0166 was drilled approximately 85m south of hole ZDDH0149 and logging has identified a larger near surface EZT body from 13.60m to 119.50m down hole and multiple deeper EZT bodies from 197.50m to 225.40m and 327.50m to 342.20m.

The discovery of these new bodies of mineralised EZT at Ternera East has the potential to add additional gold resources to the Ternera Deposit. Further drilling at Ternera East is being prioritised.

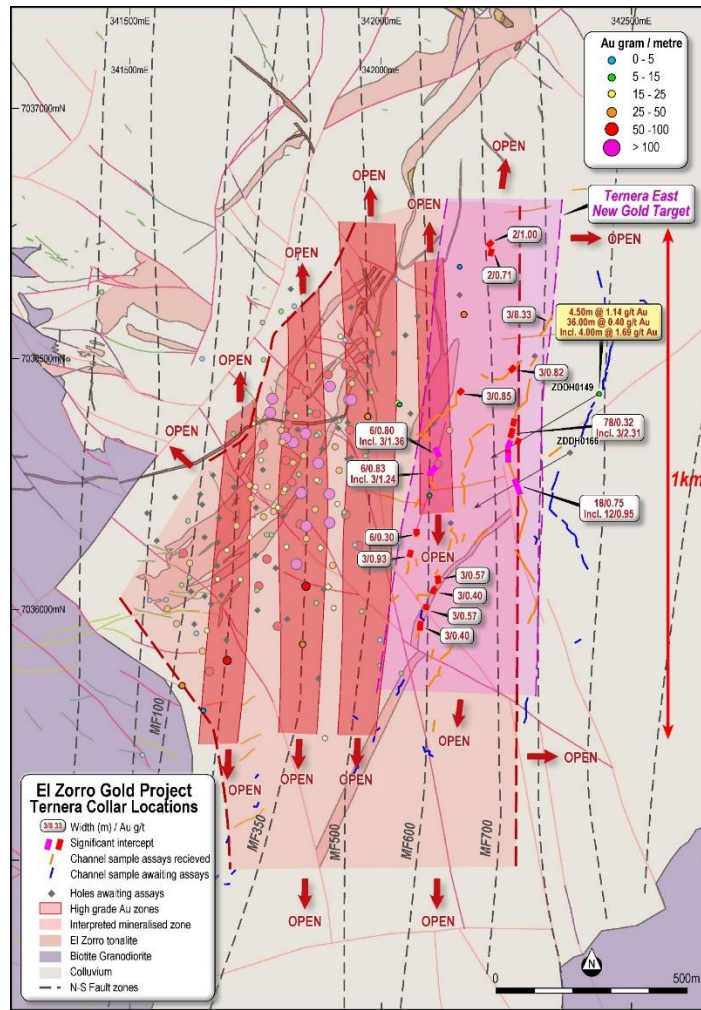


Figure 1: Ternera Drilling - Collar locations on geology. Results reported in this announcement are noted in gold highlight. Ternera East Surface sampling results shown in white. PSAD56/19S datum. Section line shown in blue.

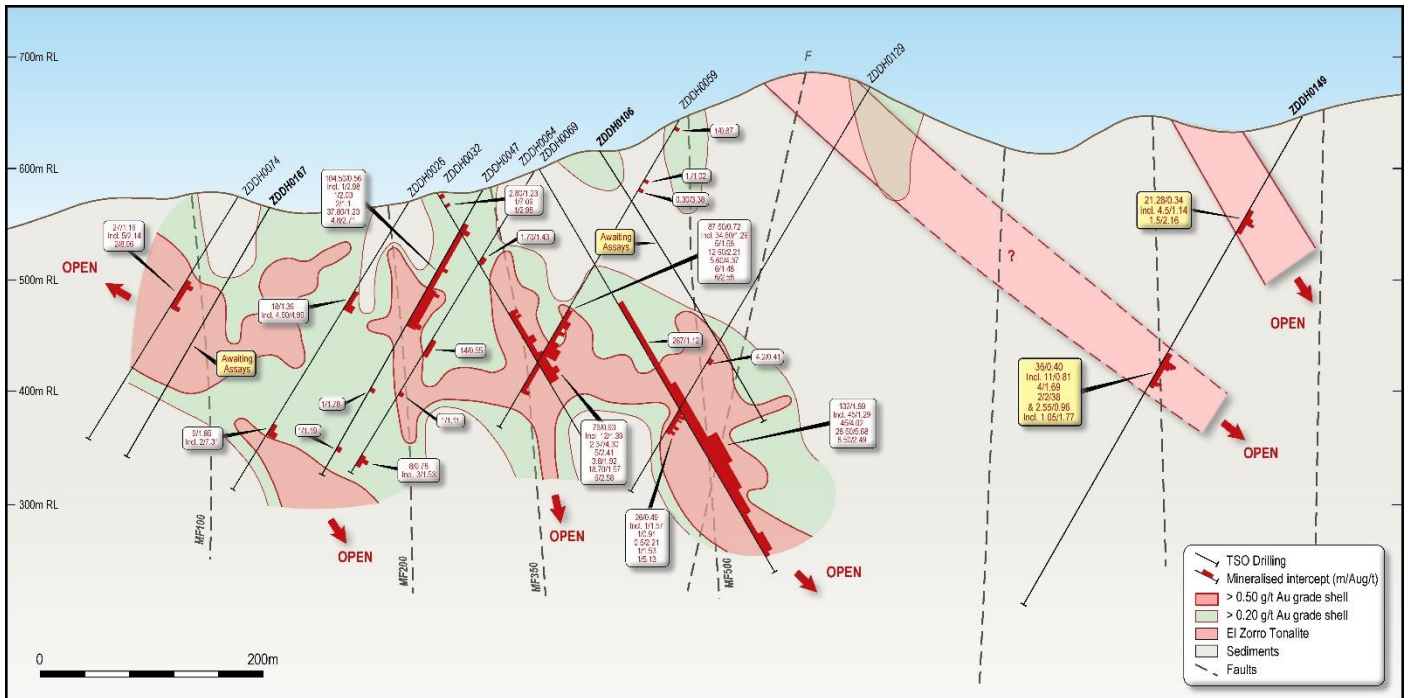


Figure 2: Ternera Drill Section - 140m looking northwest. Hole ZDDH0149 gold mineralisation shown in gold, occurring within the hanging wall of the Ternera Gold Deposit.

## **Tenera Deposit**

At Tenera, drilling focussed on infill and resource definition drilling to provide sufficient information to calculate an MRE at El Zorro. Assay results received to date continue to confirm the importance of the north-south trending fault zones (**MF Faults**) as high-grade gold zones within the broader Tenera Deposit. To date six of the MF Faults have been drilled, all returning positive drill results. Two new MF Faults were identified by drilling during the quarter (MF700 and MF800) further increasing the size of the mineralised system at Tenera.

Significant results were returned from extension drilling in the south of the deposit, which returned multiple high-grade intercepts with a wide body of mineralised EZT associated with the MF350, MF500 and MF600 faults. Mineralisation remains open to the south and further extensional drilling is planned.

A full table of significant intercepts is presented in Appendix 1.

Drilling continues 24/7 focusing on infill and extensional drilling at Tenera, as well as further delineation of the Tenera east zone. The Company also plans to drill additional holes at Drone Hill during the September 2021 quarter.

## **El Zorro Studies**

Work continued through the quarter in preparation of an initial MRE for El Zorro. Work also advanced on Mining and Development Studies at El Zorro, which included the completion of a detailed topographical survey over the Tenera Gold Deposit and along the proposed infrastructure corridor to access the project from the Pan American Highway, approximately 13km to the west of Tenera.

A detailed metallurgical testwork program commenced during the quarter with approximately 550kg consisting of 11 composite samples selected from drill core having been submitted to ALS Metallurgy in Perth Western Australia for testing. The results for this work are expected to be received during the September 2021 quarter.

## **The Quarter Ahead**

The Company expects to meet several significant milestones during the September 2021 quarter as it continues to define and expand the Tenera Gold Deposit at El Zorro.

It is expected that an initial JORC Compliant MRE will be completed during the quarter which will form the basis of a high-level Scoping Study to begin to define the project for mining. As part of the Scoping Study detailed metallurgical testwork results will become available during the quarter to define the optimal processing pathway for material from the Tenera Deposit.

Tesoro has planned an additional 50,000m of drilling to be completed during 2021 to further expand the Tenera resource.

Drilling at Tenera planned for the September 2021 quarter will a focus on further expansion of the mineralised areas as well as testing additional targets at Tenera East and Drone Hill.

## **Corporate**

### **Use of Funds**

The Company confirms that during the quarter ended 30 June 2021, it has used the funds raised pursuant to the Company's Prospectus dated 30 October 2019 and Supplementary Prospectus' dated 10 December 2019 and 29 January 2020 consistently with the "use of funds" statement in the Prospectus. A comparison of actual expenditure since the Company's re-listing on ASX follows:

|  | <b>Prospectus<br/>(24 month period)<br/>\$</b> | <b>Actual<br/>Q4 FY21<br/>\$</b> | <b>Actual<br/>TOTAL<br/>\$</b> |
|--|--|----------------------------------|--------------------------------|
| El Zorro Exploration   | 2,175,000                                      | 4,964,743                        | 13,381,654                     |
| Espina Exploration and Earn-in<br>Expenditure  | 850,000  | -                                | 55,900                         |
| Project Payments   | 295,000  | -                                | 264,092                        |
| Partial repayment of Director<br>Loan to entities associated with<br>Geoffrey McNamara | 75,000   |                                  | 75,000                         |
| Costs of the Offer   | 485,990  | -                                | 557,358                        |
| Corporate overheads and<br>administration costs  | 830,000  | -                                | 830,000                        |
| Administration costs and<br>working capital  | 189,010  | 453,481                          | 1,912,422                      |
| <b>Total</b>   | <b>4,900,000</b>                               | <b>5,418,225</b>                 | <b>16,246,426</b>              |

### Payments to Related Parties

As outlined in the Appendix 5B for the quarter ending 30 June 2021 (sections 6.1 and 6.2), during the quarter approximately \$95,000 in payments were made to related parties and/or their associates as remuneration (inc superannuation) for the Managing Director, Non-Executive Director fees and consulting fees.

Authorised by the Board of Tesoro Resources Limited.

### For more information:

#### Company:

Zeff Reeves, Managing Director  
Tesoro Resources Limited  
+61 8 9322 1587

#### Investors:

Peter Taylor  
NWR Communications  
+61 (0) 412 036 231  
peter@nwrcommunications.com.au

### About Tesoro

Tesoro Resources Limited was established with a strategy of acquiring, exploring, and developing mining projects in the Coastal Cordillera region of Chile. The Coastal Cordillera region is host to multiple world class copper and gold mines, has well established infrastructure, service providers and an experienced mining workforce. Large areas of the Coastal Cordillera remain unexplored due to the unconsolidated nature of mining concession ownership, but Tesoro, via its in-country network and experience has been able secure rights to a district scale gold project in-line with the Company's strategy. Tesoro's 95% owned Chilean Subsidiary owns 85% of the El Zorro Gold Project.



## **Future Performance**

This announcement may contain certain forward-looking statements and opinion. Forward-looking statements, including projections, forecasts and estimates, are provided as a general guide only and should not be relied on as an indication or guarantee of future performance and involve known and unknown risks, uncertainties, assumptions, contingencies and other important factors, many of which are outside the control of the Company and which are subject to change without notice and could cause the actual results, performance or achievements of the Company to be materially different from the future results, performance or achievements expressed or implied by such statements. Past performance is not necessarily a guide to future performance and no representation or warranty is made as to the likelihood of achievement or reasonableness of any forward looking statements or other forecast. Nothing contained in this announcement nor any information made available to you is, or and shall be relied upon as, a promise, representation, warranty or guarantee as to the past, present or the future performance of Tesoro.

## **Competent Persons Statement**

The information in this report that relates to Exploration Results is based on information compiled by Mr Zeffron Reeves (B App Sc (Hons) Applied Geology) MBA, MAIG). Mr Reeves is a member of the Australian Institute of Geoscientists and a Director and major shareholder of the Company. Mr Reeves has sufficient experience that is relevant to the style of mineralisation and type of deposit under consideration and to the activity which he is undertaking to qualify as a Competent Person as defined in the 2012 Edition of the Australasian Code for Reporting of Exploration Results, Mineral Resources and Ore Reserves. Mr Reeves consents to the inclusion in this report of the matters based on this information in the form and context in which it appears.

**Appendix 1 – Significant Intercept Table**

| Hole_ID  | From (m) | To (m) | Interval | Au (g/t) | Comments  |
|----------|----------|--------|----------|----------|-----------|
| ZDDH0001 | 5.00     | 119.00 | 114.00   | 0.35     |           |
| ZDDH0001 | 5.00     | 15.00  | 10.00    | 0.55     | including |
| ZDDH0001 | 5.00     | 51.30  | 46.30    | 0.45     | including |
| ZDDH0001 | 12.00    | 13.00  | 1.00     | 1.64     | including |
| ZDDH0001 | 14.30    | 15.00  | 0.70     | 2.35     | including |
| ZDDH0001 | 33.64    | 39.00  | 5.36     | 0.97     | including |
| ZDDH0001 | 44.30    | 51.30  | 7.00     | 0.67     | including |
| ZDDH0001 | 64.00    | 65.00  | 1.00     | 2.50     | including |
| ZDDH0001 | 75.50    | 79.00  | 3.50     | 0.89     | including |
| ZDDH0001 | 75.50    | 76.00  | 0.50     | 4.82     | including |
| ZDDH0001 | 107.00   | 112.00 | 5.00     | 1.11     | including |
| ZDDH0001 | 117.00   | 119.00 | 2.00     | 2.05     | including |
| ZDDH0002 | 5.70     | 68.00  | 62.30    | 0.54     |           |
| ZDDH0002 | 8.80     | 24.30  | 15.50    | 1.15     | including |
| ZDDH0002 | 8.80     | 14.00  | 5.20     | 1.96     | including |
| ZDDH0002 | 51.70    | 68.00  | 16.30    | 0.78     | including |
| ZDDH0002 | 58.00    | 61.00  | 3.00     | 3.62     | including |
| ZDDH0003 | 21.00    | 77.30  | 56.30    | 0.50     |           |
| ZDDH0003 | 21.00    | 27.00  | 6.00     | 1.96     | including |
| ZDDH0003 | 21.00    | 22.83  | 1.83     | 5.24     | including |
| ZDDH0003 | 37.20    | 43.00  | 5.80     | 1.27     | including |
| ZDDH0003 | 47.30    | 48.00  | 0.70     | 2.00     | including |
| ZDDH0003 | 64.00    | 77.30  | 13.30    | 0.41     | including |
| ZDDH0003 | 90.00    | 91.00  | 1.00     | 1.53     |           |
| ZDDH0004 | 5.00     | 66.00  | 61.00    | 0.97     |           |
| ZDDH0004 | 56.00    | 66.00  | 10.00    | 4.53     | including |
| ZDDH0004 | 57.00    | 61.00  | 4.00     | 9.60     | including |
| ZDDH0005 | 4.00     | 42.65  | 38.65    | 0.65     |           |
| ZDDH0005 | 4.00     | 32.00  | 28.00    | 0.84     | including |
| ZDDH0005 | 9.80     | 28.00  | 18.20    | 1.17     | including |
| ZDDH0005 | 9.80     | 10.15  | 0.35     | 20.10    | including |
| ZDDH0005 | 51.60    | 52.00  | 0.40     | 2.03     |           |
| ZDDH0005 | 65.00    | 67.00  | 2.00     | 1.03     |           |
| ZDDH0005 | 72.00    | 85.90  | 13.90    | 0.52     |           |
| ZDDH0005 | 72.00    | 75.00  | 3.00     | 1.90     | including |
| ZDDH0005 | 72.00    | 73.00  | 1.00     | 4.32     | including |
| ZDDH0005 | 100.60   | 102.00 | 1.40     | 2.07     |           |
| ZDDH0005 | 130.00   | 132.60 | 2.60     | 0.66     |           |
| ZDDH0005 | 135.80   | 136.80 | 1.00     | 12.20    |           |
| ZDDH0005 | 0.00     | 88.00  | 88.00    | 0.15     |           |
| ZDDH0006 | 2.40     | 3.00   | 0.60     | 0.75     | including |
| ZDDH0006 | 22.60    | 25.95  | 3.35     | 2.14     | including |
| ZDDH0006 | 24.00    | 25.00  | 1.00     | 6.10     | including |
| ZDDH0006 | 46.70    | 50.30  | 3.60     | 0.32     | including |
| ZDDH0006 | 61.10    | 64.02  | 2.92     | 0.42     | including |
| ZDDH0006 | 108.30   | 116.00 | 7.70     | 0.30     | including |
| ZDDH0006 | 133.50   | 135.60 | 2.10     | 1.30     | including |
| ZDDH0006 | 148.00   | 151.80 | 3.80     | 0.59     | including |
| ZDDH0006 | 180.10   | 244.00 | 63.90    | 0.23     | including |
| ZDDH0006 | 180.10   | 181.10 | 1.00     | 0.55     | including |
| ZDDH0006 | 184.00   | 186.00 | 2.00     | 1.06     | including |
| ZDDH0006 | 207.00   | 212.00 | 5.00     | 0.77     | including |
| ZDDH0006 | 226.00   | 227.00 | 1.00     | 0.55     | including |
| ZDDH0006 | 236.00   | 244.00 | 8.00     | 0.66     | including |
| ZDDH0007 | 1.00     | 4.00   | 3.00     | 4.75     |           |
| ZDDH0007 | 39.00    | 66.20  | 27.20    | 0.70     |           |
| ZDDH0007 | 39.00    | 58.00  | 19.00    | 0.80     | including |
| ZDDH0007 | 104.85   | 110.00 | 5.15     | 0.34     |           |
| ZDDH0007 | 117.40   | 118.00 | 0.60     | 2.75     |           |
| ZDDH0008 | 35.00    | 41.10  | 6.10     | 0.28     |           |
| ZDDH0008 | 58.00    | 59.00  | 1.00     | 1.43     |           |

| Hole_ID  | From (m) | To (m) | Interval | Au (g/t) | Comments  |
|----------|----------|--------|----------|----------|-----------|
| ZDDH0009 | 4.00     | 6.00   | 2.00     | 1.39     |           |
| ZDDH0009 | 12.55    | 38.00  | 25.45    | 0.51     |           |
| ZDDH0009 | 21.00    | 26.00  | 5.00     | 1.09     | including |
| ZDDH0009 | 48.00    | 48.50  | 0.50     | 2.19     |           |
| ZDDH0009 | 78.00    | 83.00  | 5.00     | 0.59     |           |
| ZDDH0010 | 31.00    | 33.00  | 2.00     | 2.47     |           |
| ZDDH0010 | 60.00    | 61.00  | 1.00     | 1.16     |           |
| ZDDH0010 | 66.00    | 67.00  | 1.00     | 1.04     |           |
| ZDDH0010 | 75.00    | 159.30 | 84.30    | 1.30     |           |
| ZDDH0010 | 75.00    | 104.00 | 29.00    | 2.95     | including |
| ZDDH0010 | 82.50    | 86.45  | 3.95     | 4.97     | including |
| ZDDH0010 | 91.00    | 102.00 | 11.00    | 4.70     | including |
| ZDDH0010 | 93.00    | 97.00  | 4.00     | 8.50     | including |
| ZDDH0010 | 120.00   | 126.00 | 6.00     | 1.11     | including |
| ZDDH0010 | 149.00   | 159.00 | 10.00    | 1.07     | including |
| ZDDH0011 | 176.00   | 274.30 | 98.30    | 1.58     |           |
| ZDDH0011 | 181.70   | 212.00 | 30.30    | 3.03     | including |
| ZDDH0011 | 196.40   | 212.00 | 15.60    | 3.87     | including |
| ZDDH0011 | 203.00   | 203.70 | 0.70     | 21.70    | including |
| ZDDH0011 | 203.00   | 212.00 | 9.00     | 5.07     | including |
| ZDDH0011 | 217.00   | 222.00 | 5.00     | 4.13     | including |
| ZDDH0011 | 246.60   | 256.40 | 9.80     | 2.28     | including |
| ZDDH0012 | 0.00     | 58.80  | 58.80    | 1.70     |           |
| ZDDH0012 | 1.70     | 22.00  | 20.30    | 4.50     | including |
| ZDDH0012 | 1.70     | 8.40   | 6.70     | 12.21    | including |
| ZDDH0012 | 2.30     | 4.70   | 2.40     | 33.35    | including |
| ZDDH0012 | 17.60    | 22.00  | 4.40     | 2.00     | including |
| ZDDH0012 | 17.60    | 20.00  | 2.40     | 2.82     | including |
| ZDDH0012 | 53.20    | 58.80  | 5.60     | 0.95     |           |
| ZDDH0012 | 53.20    | 56.00  | 2.80     | 1.42     | including |
| ZDDH0012 | 151.80   | 152.20 | 0.40     | 2.29     |           |
| ZDDH0013 | 0.00     | 3.00   | 3.00     | 0.83     |           |
| ZDDH0013 | 9.00     | 14.30  | 5.30     | 0.41     |           |
| ZDDH0013 | 25.00    | 29.80  | 4.80     | 0.72     |           |
| ZDDH0013 | 28.55    | 29.80  | 1.25     | 2.14     | including |
| ZDDH0013 | 46.30    | 70.00  | 23.70    | 0.85     |           |
| ZDDH0013 | 46.30    | 51.50  | 5.20     | 1.24     | including |
| ZDDH0013 | 51.25    | 65.35  | 14.10    | 1.08     | including |
| ZDDH0013 | 58.00    | 65.35  | 7.35     | 1.65     | including |
| ZDDH0013 | 102.00   | 104.00 | 2.00     | 0.79     |           |
| ZDDH0013 | 136.00   | 137.30 | 1.30     | 4.97     |           |
| ZDDH0013 | 165.00   | 173.60 | 8.60     | 1.60     |           |
| ZDDH0013 | 170.40   | 173.00 | 2.60     | 2.80     | including |
| ZDDH0014 | 15.30    | 70.60  | 55.30    | 1.01     |           |
| ZDDH0014 | 15.30    | 34.00  | 18.70    | 2.19     | including |
| ZDDH0014 | 15.30    | 26.30  | 11.00    | 3.40     | including |
| ZDDH0014 | 23.00    | 26.30  | 3.30     | 6.18     | including |
| ZDDH0014 | 64.60    | 70.60  | 6.00     | 2.03     | including |
| ZDDH0014 | 64.60    | 67.35  | 2.75     | 5.00     | including |
| ZDDH0014 | 112.00   | 122.50 | 10.50    | 0.52     |           |
| ZDDH0014 | 115.00   | 117.00 | 2.00     | 1.75     | including |
| ZDDH0014 | 177.20   | 179.00 | 1.80     | 2.37     |           |
| ZDDH0015 | 37.90    | 39.70  | 1.80     | 1.11     |           |
| ZDDH0015 | 91.90    | 132.70 | 40.80    | 0.37     |           |
| ZDDH0015 | 91.90    | 94.60  | 2.70     | 1.64     | including |
| ZDDH0015 | 112.00   | 116.00 | 4.00     | 1.13     | including |
| ZDDH0015 | 240.60   | 242.00 | 1.40     | 8.46     |           |
| ZDDH0015 | 265.90   | 269.00 | 3.10     | 0.64     |           |
| ZDDH0016 | 125.00   | 131.72 | 6.72     | 1.47     |           |
| ZDDH0016 | 152.00   | 204.60 | 52.60    | 0.62     |           |
| ZDDH0016 | 188.10   | 194.00 | 5.90     | 3.30     | including |
| ZDDH0016 | 188.58   | 188.90 | 0.32     | 31.30    | including |
| ZDDH0016 | 203.60   | 204.60 | 1.00     | 3.00     | including |
| ZDDH0016 | 281.00   | 290.00 | 9.00     | 0.36     |           |
| ZDDH0016 | 287.50   | 290.00 | 2.50     | 0.77     | including |

| Hole_ID  | From (m) | To (m) | Interval | Au (g/t) | Comments      |
|----------|----------|--------|----------|----------|---------------|
| ZDDH0017 | 44.00    | 74.00  | 30.00    | 0.94     |               |
| ZDDH0017 | 44.00    | 60.10  | 16.10    | 1.05     | including     |
| ZDDH0017 | 44.00    | 47.00  | 3.00     | 4.27     | including     |
| ZDDH0017 | 70.00    | 74.00  | 4.00     | 4.26     | including     |
| ZDDH0017 | 103.46   | 105.60 | 2.14     | 1.76     |               |
| ZDDH0017 | 167.55   | 254.00 | 86.45    | 2.29     | including     |
| ZDDH0017 | 182.70   | 233.20 | 50.50    | 3.63     | including     |
| ZDDH0017 | 183.22   | 206.22 | 23.00    | 7.20     | including     |
| ZDDH0017 | 190.00   | 205.00 | 15.00    | 10.82    | including     |
| ZDDH0017 | 197.00   | 202.30 | 5.30     | 25.31    | including     |
| ZDDH0017 | 200.00   | 202.30 | 2.30     | 46.41    | including     |
| ZDDH0018 | 187.27   | 222.00 | 34.73    | 2.94     |               |
| ZDDH0018 | 187.27   | 211.00 | 23.73    | 4.09     | including     |
| ZDDH0018 | 197.00   | 199.70 | 2.70     | 22.21    | including     |
| ZDDH0018 | 189.00   | 204.00 | 15.00    | 5.99     | including     |
| ZDDH0019 | 21.00    | 89.52  | 68.52    | 0.47     |               |
| ZDDH0019 | 36.00    | 45.00  | 9.00     | 1.34     | including     |
| ZDDH0019 | 74.00    | 79.00  | 5.00     | 1.23     | including     |
| ZDDH0020 | 87.30    | 87.60  | 0.30     | 3.33     |               |
| ZDDH0021 | 100.92   | 116.50 | 15.58    | 0.95     |               |
| ZDDH0021 | 107.50   | 112.00 | 4.50     | 1.24     | including     |
| ZDDH0021 | 100.92   | 101.70 | 0.78     | 8.44     | including     |
| ZDDH0021 | 189.25   | 208.50 | 19.25    | 2.86     | open downhole |
| ZDDH0021 | 189.25   | 201.30 | 12.05    | 4.25     | including     |
| ZDDH0021 | 189.25   | 195.40 | 6.15     | 7.37     | including     |
| ZDDH0021 | 193.90   | 195.40 | 1.50     | 20.82    | including     |
| ZDDH0022 | 30.00    | 31.00  | 1.00     | 3.16     |               |
| ZDDH0022 | 78.00    | 119.17 | 41.17    | 1.38     |               |
| ZDDH0022 | 94.40    | 95.45  | 1.05     | 2.98     | including     |
| ZDDH0022 | 105.00   | 119.17 | 14.17    | 3.25     | including     |
| ZDDH0022 | 105.00   | 110.32 | 5.32     | 6.54     | including     |
| ZDDH0023 | 146.70   | 151.00 | 4.30     | 7.25     |               |
| ZDDH0023 | 146.70   | 149.00 | 2.30     | 13.30    | including     |
| ZDDH0023 | 273.00   | 277.00 | 4.00     | 1.06     |               |
| ZDDH0023 | 276.00   | 277.00 | 1.00     | 3.32     | including     |
| ZDDH0024 | 6.00     | 9.00   | 3.00     | 1.63     |               |
| ZDDH0024 | 41.00    | 78.00  | 37.00    | 0.86     |               |
| ZDDH0024 | 41.00    | 45.50  | 4.50     | 2.12     | including     |
| ZDDH0024 | 44.10    | 45.50  | 1.40     | 5.93     | including     |
| ZDDH0024 | 54.50    | 57.00  | 2.50     | 1.87     | including     |
| ZDDH0024 | 56.50    | 69.50  | 13.00    | 1.12     | including     |
| ZDDH0024 | 66.00    | 69.50  | 3.50     | 2.53     | including     |
| ZDDH0024 | 155.00   | 169.00 | 14.00    | 3.06     |               |
| ZDDH0024 | 162.20   | 163.50 | 1.30     | 19.72    | including     |
| ZDDH0024 | 161.80   | 167.00 | 5.20     | 6.97     | including     |
| ZDDH0025 | 49.00    | 170.55 | 121.55   | 1.32     |               |
| ZDDH0025 | 73.10    | 84.00  | 10.90    | 4.57     | including     |
| ZDDH0025 | 75.00    | 82.00  | 7.00     | 6.14     | including     |
| ZDDH0025 | 104.00   | 118.00 | 14.00    | 1.63     | including     |
| ZDDH0025 | 110.00   | 113.60 | 3.60     | 4.97     | including     |
| ZDDH0025 | 148.00   | 160.27 | 12.27    | 4.98     | including     |
| ZDDH0025 | 148.00   | 170.55 | 22.55    | 2.98     | including     |
| ZDDH0025 | 155.20   | 159.90 | 4.70     | 10.69    | including     |
| ZDDH0026 | 92.00    | 110.00 | 18.00    | 1.36     |               |
| ZDDH0026 | 105.40   | 110.00 | 4.60     | 4.99     | including     |
| ZDDH0026 | 233.00   | 242.00 | 9.00     | 1.85     |               |
| ZDDH0026 | 240.00   | 242.00 | 2.00     | 7.31     | including     |
| ZDDH0027 | 176.00   | 206.50 | 30.50    | 0.40     |               |
| ZDDH0027 | 176.00   | 202.00 | 26.00    | 0.44     | including     |
| ZDDH0027 | 176.00   | 188.00 | 12.00    | 0.64     | including     |
| ZDDH0027 | 176.00   | 182.00 | 6.00     | 1.21     | including     |

| Hole_ID  | From (m) | To (m) | Interval | Au (g/t) | Comments      |
|----------|----------|--------|----------|----------|---------------|
| ZDDH0028 | 14.00    | 14.75  | 0.75     | 3.23     |               |
| ZDDH0028 | 21.00    | 28.00  | 7.00     | 0.85     |               |
| ZDDH0028 | 25.00    | 25.90  | 0.90     | 5.03     | including     |
| ZDDH0028 | 42.00    | 49.00  | 7.00     | 0.61     |               |
| ZDDH0028 | 43.90    | 45.00  | 1.10     | 1.10     | including     |
| ZDDH0029 | 29.50    | 243.00 | 213.50   | 0.73     |               |
| ZDDH0029 | 29.50    | 93.00  | 63.50    | 1.81     | including     |
| ZDDH0029 | 29.50    | 31.20  | 1.70     | 1.20     | including     |
| ZDDH0029 | 43.00    | 48.00  | 5.00     | 2.76     | including     |
| ZDDH0029 | 56.64    | 61.84  | 5.20     | 3.36     | including     |
| ZDDH0029 | 72.00    | 80.00  | 8.00     | 1.24     | including     |
| ZDDH0029 | 91.00    | 93.00  | 2.00     | 33.00    | including     |
| ZDDH0029 | 121.00   | 130.70 | 9.70     | 0.53     |               |
| ZDDH0029 | 121.00   | 122.00 | 1.00     | 3.20     | including     |
| ZDDH0029 | 166.30   | 195.00 | 28.70    | 0.82     |               |
| ZDDH0029 | 180.00   | 195.00 | 15.00    | 1.33     | including     |
| ZDDH0030 | 5.20     | 6.40   | 1.20     | 0.74     |               |
| ZDDH0030 | 50.00    | 76.00  | 26.00    | 0.69     |               |
| ZDDH0030 | 66.00    | 76.00  | 10.00    | 1.54     | including     |
| ZDDH0030 | 66.00    | 71.10  | 5.10     | 2.64     | including     |
| ZDDH0030 | 66.00    | 67.00  | 1.00     | 6.89     | including     |
| ZDDH0030 | 70.00    | 71.10  | 1.10     | 5.73     | including     |
| ZDDH0030 | 101.00   | 102.50 | 1.50     | 1.13     |               |
| ZDDH0030 | 117.00   | 120.00 | 3.00     | 3.23     |               |
| ZDDH0030 | 117.00   | 119.13 | 2.13     | 4.15     | including     |
| ZDDH0030 | 165.00   | 167.00 | 2.00     | 4.05     |               |
| ZDDH0030 | 199.40   | 199.00 | 3.60     | 1.41     | open downhole |
| ZDDH0030 | 202.95   | 203.90 | 0.95     | 5.12     | open downhole |
| ZDDH0031 | 72.00    | 303.00 | 231.00   | 0.83     |               |
| ZDDH0031 | 72.00    | 126.00 | 54.00    | 1.69     |               |
| ZDDH0031 | 72.00    | 75.60  | 3.60     | 1.27     | including     |
| ZDDH0031 | 100.00   | 104.44 | 4.44     | 1.04     | including     |
| ZDDH0031 | 100.00   | 125.00 | 25.00    | 3.36     | including     |
| ZDDH0031 | 118.30   | 125.00 | 6.70     | 11.57    | including     |
| ZDDH0031 | 146.40   | 154.00 | 7.60     | 0.79     | including     |
| ZDDH0031 | 171.60   | 173.00 | 1.40     | 1.40     | including     |
| ZDDH0031 | 193.30   | 217.60 | 24.30    | 2.43     | including     |
| ZDDH0031 | 193.30   | 208.00 | 14.70    | 3.77     | including     |
| ZDDH0031 | 193.30   | 197.00 | 3.70     | 4.16     | including     |
| ZDDH0031 | 204.34   | 217.60 | 13.26    | 3.25     | including     |
| ZDDH0031 | 204.34   | 208.00 | 3.66     | 10.76    | including     |
| ZDDH0031 | 228.00   | 229.00 | 1.00     | 2.17     | including     |
| ZDDH0031 | 248.00   | 263.90 | 15.90    | 1.04     | including     |
| ZDDH0031 | 291.00   | 295.00 | 4.00     | 1.00     | including     |
| ZDDH0032 | 3.20     | 6.00   | 2.80     | 1.23     |               |
| ZDDH0032 | 17.30    | 18.30  | 1.00     | 7.09     |               |
| ZDDH0032 | 43.50    | 44.00  | 0.50     | 5.70     |               |
| ZDDH0032 | 75.00    | 76.00  | 1.00     | 5.02     |               |
| ZDDH0032 | 128.00   | 204.00 | 76.00    | 0.93     |               |
| ZDDH0032 | 128.00   | 140.00 | 12.00    | 1.39     | including     |
| ZDDH0032 | 132.63   | 135.00 | 2.37     | 4.30     | including     |
| ZDDH0032 | 157.00   | 162.00 | 5.00     | 2.41     | including     |
| ZDDH0032 | 171.00   | 174.80 | 3.80     | 1.92     | including     |
| ZDDH0032 | 178.30   | 197.00 | 18.70    | 1.57     | including     |
| ZDDH0032 | 178.30   | 179.40 | 1.10     | 5.15     | including     |
| ZDDH0032 | 191.00   | 197.00 | 6.00     | 2.58     | including     |
| ZDDH0033 | 40.00    | 68.00  | 28.00    | 1.22     |               |
| ZDDH0033 | 57.00    | 67.00  | 10.00    | 3.17     | including     |
| ZDDH0033 | 59.00    | 63.00  | 4.00     | 5.96     | including     |
| ZDDH0033 | 100.00   | 104.00 | 4.00     | 1.51     |               |
| ZDDH0033 | 134.70   | 137.00 | 2.30     | 1.27     |               |
| ZDDH0033 | 143.00   | 144.00 | 1.00     | 1.45     |               |



| Hole_ID  | From (m) | To (m) | Interval | Au (g/t) | Comments  |
|----------|----------|--------|----------|----------|-----------|
| ZDDH0034 | 17.00    | 28.00  | 11.00    | 0.79     |           |
| ZDDH0034 | 23.00    | 24.00  | 1.00     | 4.59     | including |
| ZDDH0034 | 27.00    | 28.00  | 1.00     | 1.77     | including |
| ZDDH0034 | 62.22    | 63.34  | 1.12     | 2.85     |           |
| ZDDH0034 | 87.00    | 92.84  | 5.84     | 1.12     |           |
| ZDDH0034 | 89.00    | 91.00  | 2.00     | 2.45     |           |
| ZDDH0034 | 105.40   | 106.00 | 0.60     | 1.15     |           |
| ZDDH0034 | 116.00   | 117.00 | 1.00     | 1.17     |           |
| ZDDH0034 | 172.00   | 173.00 | 1.00     | 1.68     |           |
| ZDDH0034 | 180.40   | 181.50 | 1.10     | 6.58     |           |
| ZDDH0034 | 193.00   | 194.00 | 1.00     | 2.73     |           |
| ZDDH0034 | 202.00   | 203.00 | 1.00     | 2.12     |           |
| ZDDH0035 | 67.00    | 68.00  | 1.00     | 2.67     |           |
| ZDDH0035 | 81.10    | 110.34 | 29.24    | 1.05     |           |
| ZDDH0035 | 89.00    | 94.00  | 5.00     | 4.11     | including |
| ZDDH0035 | 84.00    | 106.00 | 22.00    | 1.34     | including |
| ZDDH0035 | 144.00   | 155.00 | 11.00    | 1.15     |           |
| ZDDH0035 | 153.00   | 155.00 | 2.00     | 4.41     | including |
| ZDDH0035 | 162.00   | 164.00 | 2.00     | 1.03     |           |
| ZDDH0035 | 199.00   | 200.00 | 1.00     | 1.76     |           |
| ZDDH0035 | 192.00   | 238.00 | 46.00    | 0.72     |           |
| ZDDH0035 | 224.00   | 238.00 | 14.00    | 1.86     | including |
| ZDDH0035 | 224.00   | 233.00 | 9.00     | 2.59     | including |
| ZDDH0035 | 277.00   | 278.00 | 1.00     | 1.63     |           |
| ZDDH0036 | 74.00    | 125.00 | 51.00    | 1.07     |           |
| ZDDH0036 | 74.00    | 96.00  | 22.00    | 2.16     | including |
| ZDDH0036 | 88.30    | 96.00  | 7.70     | 5.04     | including |
| ZDDH0036 | 104.00   | 105.00 | 1.00     | 2.33     | including |
| ZDDH0036 | 114.00   | 115.00 | 1.00     | 2.84     | including |
| ZDDH0036 | 165.00   | 166.00 | 1.00     | 1.11     |           |
| ZDDH0036 | 215.00   | 216.00 | 1.00     | 1.60     |           |
| ZDDH0037 | 42.00    | 65.00  | 23.00    | 0.40     |           |
| ZDDH0037 | 42.00    | 42.68  | 0.68     | 1.55     | including |
| ZDDH0037 | 56.00    | 65.00  | 9.00     | 0.70     | including |
| ZDDH0037 | 56.00    | 57.00  | 1.00     | 2.47     | including |
| ZDDH0037 | 62.00    | 64.00  | 2.00     | 1.32     | including |
| ZDDH0037 | 149.00   | 172.00 | 23.00    | 0.82     |           |
| ZDDH0037 | 149.00   | 154.00 | 5.00     | 1.47     | including |
| ZDDH0037 | 162.00   | 172.00 | 10.00    | 0.92     | including |
| ZDDH0037 | 162.00   | 168.00 | 6.00     | 1.04     | including |
| ZDDH0038 | 23.00    | 24.00  | 1.00     | 3.12     |           |
| ZDDH0038 | 74.20    | 113.00 | 38.80    | 0.49     |           |
| ZDDH0038 | 74.20    | 77.00  | 2.80     | 2.06     | including |
| ZDDH0038 | 92.00    | 93.00  | 1.00     | 4.39     | including |
| ZDDH0038 | 105.00   | 106.00 | 1.00     | 2.11     | including |
| ZDDH0038 | 148.00   | 152.00 | 4.00     | 1.17     | including |
| ZDDH0038 | 178.00   | 186.00 | 8.00     | 0.50     |           |
| ZDDH0038 | 185.00   | 186.00 | 1.00     | 2.48     | including |
| ZDDH0038 | 200.00   | 208.10 | 8.10     | 1.12     | including |
| ZDDH0038 | 202.00   | 204.00 | 2.00     | 3.72     | including |
| ZDDH0039 | 2.50     | 5.60   | 3.10     | 0.39     |           |
| ZDDH0039 | 78.70    | 81.00  | 2.30     | 1.43     |           |
| ZDDH0039 | 188.00   | 252.50 | 64.50    | 0.47     |           |
| ZDDH0039 | 212.00   | 232.00 | 20.00    | 0.84     | including |
| ZDDH0039 | 212.00   | 218.00 | 6.00     | 1.49     | including |
| ZDDH0039 | 226.00   | 227.00 | 1.00     | 3.86     | including |
| ZDDH0039 | 237.00   | 238.00 | 1.00     | 2.30     | including |
| ZDDH0039 | 268.00   | 269.00 | 1.00     | 1.62     | including |
| ZDDH0040 | 136.00   | 197.00 | 61.00    | 0.75     |           |
| ZDDH0040 | 136.00   | 152.00 | 16.00    | 1.96     | including |
| ZDDH0040 | 136.00   | 146.00 | 10.00    | 2.61     | including |
| ZDDH0040 | 142.00   | 146.00 | 4.00     | 5.34     | including |
| ZDDH0040 | 160.00   | 164.00 | 4.00     | 0.95     | including |
| ZDDH0040 | 161.00   | 162.00 | 1.00     | 2.84     | including |
| ZDDH0040 | 182.00   | 188.00 | 6.00     | 0.72     | including |
| ZDDH0040 | 195.00   | 197.00 | 2.00     | 2.75     | including |
| ZDDH0040 | 288.00   | 291.00 | 3.00     | 1.24     | including |
| ZDDH0041 | 2.00     | 12.00  | 10.00    | 0.55     |           |
| ZDDH0041 | 6.00     | 8.00   | 2.00     | 1.33     | including |
| ZDDH0041 | 23.50    | 52.00  | 28.50    | 0.38     |           |
| ZDDH0041 | 23.50    | 32.00  | 8.50     | 0.48     | including |
| ZDDH0041 | 29.00    | 32.00  | 3.00     | 0.99     | including |

| Hole_ID  | From (m) | To (m) | Interval | Au (g/t) | Comments  |
|----------|----------|--------|----------|----------|-----------|
| ZDDH0041 | 40.00    | 46.00  | 6.00     | 0.61     |           |
| ZDDH0041 | 106.20   | 108.00 | 1.80     | 3.49     |           |
| ZDDH0041 | 127.50   | 128.00 | 0.50     | 29.90    |           |
| ZDDH0041 | 140.00   | 145.00 | 5.00     | 5.91     |           |
| ZDDH0041 | 141.65   | 143.50 | 1.85     | 15.22    | including |
| ZDDH0042 | 112.00   | 127.00 | 15.00    | 0.68     |           |
| ZDDH0042 | 126.00   | 127.00 | 1.00     | 5.64     | including |
| ZDDH0043 | 5.30     | 56.00  | 50.70    | 0.45     |           |
| ZDDH0043 | 5.30     | 22.50  | 17.20    | 0.94     | including |
| ZDDH0043 | 9.50     | 13.00  | 3.50     | 3.44     | including |
| ZDDH0043 | 80.00    | 105.00 | 25.00    | 0.41     |           |
| ZDDH0043 | 81.00    | 85.00  | 4.00     | 0.87     | including |
| ZDDH0043 | 103.00   | 105.00 | 2.00     | 1.60     | including |
| ZDDH0043 | 241.00   | 242.00 | 1.00     | 1.02     |           |
| ZDDH0044 | 104.00   | 107.00 | 3.00     | 0.92     |           |
| ZDDH0044 | 104.00   | 105.00 | 1.00     | 2.25     | including |
| ZDDH0045 | 23.00    | 50.00  | 27.00    | 0.59     |           |
| ZDDH0045 | 36.00    | 46.20  | 10.20    | 1.07     | including |
| ZDDH0045 | 36.00    | 40.00  | 4.00     | 1.80     | including |
| ZDDH0045 | 97.00    | 98.00  | 1.00     | 1.91     |           |
| ZDDH0045 | 196.30   | 203.00 | 6.70     | 1.10     |           |
| ZDDH0045 | 197.00   | 198.50 | 1.50     | 3.21     | including |
| ZDDH0045 | 196.30   | 199.00 | 2.70     | 2.70     | including |
| ZDDH0046 | 17.60    | 39.00  | 21.40    | 1.17     |           |
| ZDDH0046 | 26.00    | 31.00  | 5.00     | 3.75     | including |
| ZDDH0046 | 28.00    | 31.00  | 3.00     | 5.71     | including |
| ZDDH0046 | 180.00   | 181.00 | 1.00     | 1.11     |           |
| ZDDH0046 | 223.00   | 224.00 | 1.00     | 1.45     |           |
| ZDDH0046 | 248.60   | 250.00 | 1.40     | 1.35     |           |
| ZDDH0047 | 30.00    | 134.50 | 104.50   | 0.56     |           |
| ZDDH0047 | 35.00    | 36.00  | 1.00     | 2.98     | including |
| ZDDH0047 | 74.00    | 75.00  | 1.00     | 2.03     | including |
| ZDDH0047 | 97.00    | 134.80 | 37.80    | 1.23     | including |
| ZDDH0047 | 97.00    | 109.00 | 12.00    | 2.68     | including |
| ZDDH0047 | 97.00    | 99.00  | 2.00     | 11.00    | including |
| ZDDH0047 | 130.00   | 134.80 | 4.80     | 2.71     | including |
| ZDDH0047 | 210.00   | 211.00 | 1.00     | 1.78     |           |
| ZDDH0047 | 288.00   | 289.00 | 1.00     | 1.19     |           |
| ZDDH0048 | 45.00    | 90.00  | 45.00    | 0.54     |           |
| ZDDH0048 | 53.50    | 54.50  | 1.00     | 3.15     | including |
| ZDDH0048 | 47.00    | 55.00  | 8.00     | 1.02     | including |
| ZDDH0048 | 80.00    | 83.00  | 3.00     | 4.18     | including |
| ZDDH0049 | 124.00   | 235.50 | 111.50   | 1.25     |           |
| ZDDH0049 | 124.00   | 182.00 | 58.00    | 2.04     | including |
| ZDDH0049 | 154.00   | 181.50 | 27.50    | 3.57     | including |
| ZDDH0049 | 124.00   | 141.00 | 17.00    | 1.11     | including |
| ZDDH0049 | 124.00   | 125.00 | 1.00     | 10.25    | including |
| ZDDH0049 | 159.00   | 172.00 | 13.00    | 5.32     | including |
| ZDDH0049 | 159.00   | 165.00 | 6.00     | 4.17     | including |
| ZDDH0049 | 177.00   | 182.00 | 5.00     | 5.14     | including |
| ZDDH0049 | 213.00   | 235.50 | 22.50    | 0.89     | including |
| ZDDH0049 | 215.00   | 218.00 | 3.00     | 1.39     | including |
| ZDDH0049 | 227.00   | 235.50 | 8.50     | 1.81     | including |
| ZDDH0049 | 231.00   | 235.50 | 4.50     | 3.07     | including |
| ZDDH0049 | 245.00   | 246.00 | 1.00     | 1.66     |           |
| ZDDH0049 | 285.00   | 286.00 | 1.00     | 3.81     |           |
| ZDDH0049 | 290.00   | 291.00 | 1.00     | 1.12     |           |
| ZDDH0050 | 6.00     | 16.00  | 10.00    | 1.56     |           |
| ZDDH0050 | 7.00     | 8.00   | 1.00     | 10.65    | including |
| ZDDH0050 | 92.00    | 93.00  | 1.00     | 2.55     |           |
| ZDDH0050 | 157.00   | 222.00 | 65.00    | 0.84     |           |
| ZDDH0050 | 183.00   | 185.00 | 2.00     | 2.02     | including |
| ZDDH0050 | 192.00   | 193.00 | 1.00     | 2.35     | including |
| ZDDH0050 | 202.00   | 209.00 | 7.00     | 5.84     | including |
| ZDDH0050 | 205.00   | 207.50 | 2.50     | 15.92    | including |
| ZDDH0050 | 220.00   | 221.00 | 1.00     | 1.27     | including |

| Hole_ID  | From (m) | To (m) | Interval | Au (g/t) | Comments  |
|----------|----------|--------|----------|----------|-----------|
| ZDDH0051 | 249.00   | 347.00 | 98.00    | 0.95     |           |
| ZDDH0051 | 251.00   | 282.00 | 31.00    | 1.55     | including |
| ZDDH0051 | 251.00   | 265.00 | 14.00    | 2.71     | including |
| ZDDH0051 | 258.00   | 264.00 | 6.00     | 4.86     | including |
| ZDDH0051 | 260.00   | 261.00 | 1.00     | 27.60    | including |
| ZDDH0051 | 264.00   | 265.00 | 1.00     | 9.85     | including |
| ZDDH0051 | 303.00   | 320.00 | 17.00    | 1.03     | including |
| ZDDH0051 | 317.00   | 318.00 | 1.00     | 5.99     | including |
| ZDDH0051 | 317.00   | 332.50 | 15.50    | 1.19     | including |
| ZDDH0051 | 328.00   | 347.00 | 19.00    | 1.25     | including |
| ZDDH0051 | 345.00   | 346.00 | 1.00     | 8.25     | including |
| ZDDH0052 | 10.00    | 11.00  | 1.00     | 1.35     |           |
| ZDDH0052 | 25.00    | 67.00  | 42.00    | 0.44     |           |
| ZDDH0052 | 25.50    | 26.50  | 1.00     | 2.25     | including |
| ZDDH0052 | 64.00    | 68.00  | 4.00     | 2.37     |           |
| ZDDH0052 | 154.00   | 157.00 | 3.00     | 3.27     |           |
| ZDDH0052 | 177.00   | 178.00 | 1.00     | 1.51     |           |
| ZDDH0053 | 7.70     | 87.00  | 79.30    | 0.72     |           |
| ZDDH0053 | 15.00    | 16.00  | 1.00     | 1.20     | including |
| ZDDH0053 | 36.00    | 37.00  | 1.00     | 1.12     | including |
| ZDDH0053 | 64.00    | 87.00  | 23.00    | 2.04     | including |
| ZDDH0053 | 64.00    | 71.00  | 7.00     | 4.47     | including |
| ZDDH0053 | 66.00    | 69.00  | 3.00     | 7.89     | including |
| ZDDH0053 | 64.00    | 80.50  | 16.50    | 2.50     | including |
| ZDDH0053 | 134.50   | 136.86 | 2.36     | 1.13     |           |
| ZDDH0053 | 146.00   | 147.00 | 1.00     | 1.87     |           |
| ZDDH0053 | 188.00   | 191.00 | 3.00     | 0.58     |           |
| ZDDH0053 | 240.00   | 241.00 | 1.00     | 1.09     |           |
| ZDDH0053 | 274.00   | 281.00 | 7.00     | 0.77     |           |
| ZDDH0053 | 274.00   | 275.00 | 1.00     | 3.65     | including |
| ZDDH0053 | 280.00   | 281.00 | 1.00     | 1.11     | including |
| ZDDH0054 | 91.00    | 110.00 | 19.00    | 0.46     |           |
| ZDDH0054 | 104.00   | 108.00 | 4.00     | 1.48     | including |
| ZDDH0054 | 118.50   | 119.20 | 0.70     | 1.72     |           |
| ZDDH0054 | 252.00   | 253.00 | 1.00     | 1.23     |           |
| ZDDH0054 | 280.00   | 281.00 | 1.00     | 8.75     |           |
| ZDDH0054 | 336.00   | 337.00 | 1.00     | 1.23     |           |
| ZDDH0055 | 20.00    | 241.20 | 221.20   | 0.62     |           |
| ZDDH0055 | 21.00    | 22.00  | 1.00     | 3.19     | including |
| ZDDH0055 | 48.00    | 122.00 | 74.00    | 1.05     | including |
| ZDDH0055 | 48.00    | 88.50  | 40.50    | 1.51     | including |
| ZDDH0055 | 48.00    | 60.12  | 12.12    | 4.83     | including |
| ZDDH0055 | 77.00    | 80.00  | 3.00     | 16.88    | including |
| ZDDH0055 | 105.00   | 109.00 | 4.00     | 3.04     | including |
| ZDDH0055 | 168.00   | 169.00 | 1.00     | 2.00     | including |
| ZDDH0055 | 200.00   | 241.20 | 41.20    | 1.13     | including |
| ZDDH0055 | 200.00   | 233.00 | 33.00    | 1.36     | including |
| ZDDH0055 | 200.00   | 201.00 | 1.00     | 2.83     | including |
| ZDDH0055 | 207.00   | 208.00 | 1.00     | 6.51     | including |
| ZDDH0055 | 217.00   | 231.00 | 14.00    | 2.03     | including |
| ZDDH0055 | 223.00   | 231.00 | 8.00     | 2.64     | including |
| ZDDH0055 | 282.00   | 326.00 | 44.00    | 0.48     |           |
| ZDDH0055 | 282.00   | 283.00 | 1.00     | 3.91     | including |
| ZDDH0055 | 302.00   | 308.00 | 6.00     | 1.97     | including |
| ZDDH0055 | 319.00   | 320.00 | 1.00     | 1.51     | including |
| ZDDH0055 | 325.00   | 326.00 | 1.00     | 3.77     | including |
| ZDDH0056 | 232.00   | 236.70 | 4.70     | 0.70     |           |
| ZDDH0056 | 236.00   | 236.70 | 0.70     | 3.09     |           |
| ZDDH0057 | 22.00    | 44.00  | 22.00    | 1.03     |           |
| ZDDH0057 | 22.00    | 23.00  | 1.00     | 10.20    | including |
| ZDDH0057 | 22.00    | 30.00  | 8.00     | 1.61     | including |
| ZDDH0057 | 216.00   | 233.00 | 17.00    | 0.55     |           |
| ZDDH0057 | 225.00   | 228.00 | 3.00     | 1.93     | including |
| ZDDH0057 | 274.00   | 351.00 | 77.00    | 1.13     |           |
| ZDDH0057 | 279.00   | 321.00 | 42.00    | 1.97     | including |
| ZDDH0057 | 279.00   | 311.00 | 32.00    | 2.32     | including |
| ZDDH0057 | 283.00   | 298.00 | 15.00    | 3.25     | including |
| ZDDH0057 | 318.00   | 321.00 | 3.00     | 2.75     | including |

| Hole_ID  | From (m) | To (m) | Interval | Au (g/t) | Comments  |
|----------|----------|--------|----------|----------|-----------|
| ZDDH0058 | 34.00    | 35.00  | 1.00     | 1.29     |           |
| ZDDH0058 | 237.00   | 250.00 | 13.00    | 0.47     |           |
| ZDDH0058 | 237.00   | 241.00 | 4.00     | 0.69     | including |
| ZDDH0058 | 248.00   | 250.00 | 2.00     | 1.49     | including |
| ZDDH0059 | 61.00    | 62.00  | 1.00     | 1.02     |           |
| ZDDH0059 | 194.50   | 282.00 | 87.50    | 0.72     |           |
| ZDDH0059 | 196.00   | 244.50 | 48.50    | 1.02     | including |
| ZDDH0059 | 207.00   | 241.60 | 34.60    | 1.29     | including |
| ZDDH0059 | 229.00   | 241.60 | 12.60    | 2.21     | including |
| ZDDH0059 | 196.00   | 198.00 | 2.00     | 1.76     | including |
| ZDDH0059 | 207.00   | 212.00 | 5.00     | 1.58     | including |
| ZDDH0059 | 236.00   | 241.60 | 5.60     | 4.37     | including |
| ZDDH0059 | 276.00   | 282.00 | 6.00     | 1.48     |           |
| ZDDH0060 | 156.00   | 168.00 | 12.00    | 0.44     |           |
| ZDDH0060 | 163.00   | 166.00 | 3.00     | 0.78     | including |
| ZDDH0060 | 215.00   | 220.95 | 5.95     | 0.37     |           |
| ZDDH0061 | 157.00   | 158.00 | 1.00     | 2.31     |           |
| ZDDH0061 | 194.00   | 195.00 | 1.00     | 0.83     |           |
| ZDDH0062 | 8.00     | 70.00  | 62.00    | 0.46     |           |
| ZDDH0062 | 8.00     | 31.00  | 23.00    | 0.88     | including |
| ZDDH0062 | 8.00     | 21.50  | 13.50    | 1.12     | including |
| ZDDH0062 | 13.00    | 15.50  | 2.50     | 2.01     | including |
| ZDDH0062 | 18.00    | 21.50  | 3.50     | 1.94     | including |
| ZDDH0062 | 68.00    | 70.00  | 2.00     | 2.40     | including |
| ZDDH0062 | 110.00   | 111.00 | 1.00     | 1.18     |           |
| ZDDH0062 | 119.00   | 120.00 | 1.00     | 2.36     |           |
| ZDDH0062 | 108.00   | 201.00 | 93.00    | 0.37     |           |
| ZDDH0062 | 129.00   | 173.00 | 44.00    | 0.53     | including |
| ZDDH0062 | 134.00   | 141.00 | 7.00     | 0.76     | including |
| ZDDH0062 | 162.20   | 172.00 | 9.80     | 1.30     | including |
| ZDDH0062 | 225.00   | 226.00 | 1.00     | 1.40     |           |
| ZDDH0062 | 256.00   | 280.00 | 24.00    | 0.66     |           |
| ZDDH0062 | 256.00   | 261.00 | 5.00     | 2.29     | including |
| ZDDH0063 | 0.00     | 3.00   | 3.00     | 2.26     |           |
| ZDDH0063 | 166.00   | 332.00 | 166.00   | 0.57     |           |
| ZDDH0063 | 169.00   | 171.00 | 2.00     | 1.20     | including |
| ZDDH0063 | 180.00   | 210.00 | 30.00    | 0.90     | including |
| ZDDH0063 | 180.00   | 182.00 | 2.00     | 7.52     | including |
| ZDDH0063 | 197.00   | 210.00 | 13.00    | 0.75     | including |
| ZDDH0063 | 277.00   | 316.00 | 39.00    | 1.22     | including |
| ZDDH0063 | 300.00   | 316.00 | 16.00    | 2.96     | including |
| ZDDH0063 | 311.00   | 316.00 | 5.00     | 9.09     | including |
| ZDDH0064 | 102.00   | 103.70 | 1.70     | 1.43     |           |
| ZDDH0064 | 188.00   | 202.00 | 14.00    | 0.55     |           |
| ZDDH0064 | 192.00   | 196.00 | 4.00     | 1.33     | including |
| ZDDH0064 | 243.00   | 244.00 | 1.00     | 1.11     |           |
| ZDDH0064 | 309.00   | 317.00 | 8.00     | 0.78     |           |
| ZDDH0064 | 311.00   | 314.00 | 3.00     | 1.53     |           |
| ZDDH0065 | 25.00    | 27.00  | 2.00     | 1.25     |           |
| ZDDH0065 | 56.40    | 58.80  | 2.40     | 0.78     |           |
| ZDDH0065 | 155.00   | 167.00 | 12.00    | 1.72     |           |
| ZDDH0066 | 306.00   | 465.00 | 159.00   | 0.46     | including |
| ZDDH0066 | 306.00   | 443.00 | 137.00   | 0.51     | including |
| ZDDH0066 | 389.00   | 436.00 | 47.00    | 1.00     | including |
| ZDDH0066 | 308.00   | 310.00 | 2.00     | 1.98     | including |
| ZDDH0066 | 357.00   | 362.00 | 5.00     | 1.10     | including |
| ZDDH0066 | 357.50   | 361.00 | 3.50     | 1.43     | including |
| ZDDH0066 | 389.00   | 412.00 | 23.00    | 1.09     | including |
| ZDDH0066 | 389.00   | 401.00 | 12.00    | 1.59     | including |
| ZDDH0066 | 389.00   | 392.00 | 3.00     | 2.97     | including |
| ZDDH0066 | 424.00   | 443.00 | 19.00    | 1.24     | including |
| ZDDH0066 | 427.00   | 436.00 | 9.00     | 2.14     | including |
| ZDDH0067 | 5.00     | 64.00  | 59.00    | 1.72     |           |

| Hole_ID  | From (m) | To (m) | Interval | Au (g/t) | Comments  |
|----------|----------|--------|----------|----------|-----------|
| ZDDH0067 | 5.00     | 37.40  | 32.40    | 3.05     | including |
| ZDDH0067 | 31.00    | 37.00  | 6.00     | 15.18    | including |
| ZDDH0067 | 81.00    | 82.00  | 1.00     | 1.87     |           |
| ZDDH0067 | 91.00    | 96.00  | 5.00     | 0.53     |           |
| ZDDH0067 | 107.00   | 121.00 | 14.00    | 0.47     |           |
| ZDDH0067 | 108.00   | 109.00 | 1.00     | 1.27     | including |
| ZDDH0067 | 119.00   | 121.00 | 2.00     | 1.17     | including |
| ZDDH0067 | 136.00   | 139.00 | 3.00     | 2.13     |           |
| ZDDH0068 | 0.00     | 7.00   | 7.00     | 0.45     |           |
| ZDDH0068 | 56.00    | 117.70 | 61.70    | 0.30     |           |
| ZDDH0068 | 60.00    | 83.00  | 23.00    | 0.46     | including |
| ZDDH0068 | 60.00    | 61.00  | 1.00     | 2.43     | including |
| ZDDH0068 | 74.00    | 75.00  | 1.00     | 1.14     | including |
| ZDDH0068 | 114.90   | 117.70 | 2.80     | 0.84     | including |
| ZDDH0068 | 143.00   | 154.00 | 11.00    | 0.62     |           |
| ZDDH0068 | 152.00   | 153.00 | 1.00     | 1.59     | including |
| ZDDH0068 | 185.00   | 186.00 | 1.00     | 1.84     |           |
| ZDDH0068 | 189.00   | 190.00 | 1.00     | 1.37     |           |
| ZDDH0068 | 200.00   | 201.00 | 1.00     | 2.03     |           |
| ZDDH0068 | 209.00   | 210.00 | 1.00     | 4.42     |           |
| ZDDH0068 | 225.00   | 226.00 | 1.00     | 1.53     |           |
| ZDDH0068 | 303.00   | 303.93 | 0.93     | 1.14     |           |
| ZDDH0069 | 147.00   | 414.00 | 267.00   | 1.12     |           |
| ZDDH0069 | 221.00   | 414.00 | 193.00   | 1.47     | including |
| ZDDH0069 | 224.00   | 404.00 | 180.00   | 1.57     | including |
| ZDDH0069 | 234.00   | 366.00 | 132.00   | 1.89     | including |
| ZDDH0069 | 147.00   | 162.00 | 15.00    | 0.68     | including |
| ZDDH0069 | 147.00   | 152.00 | 5.00     | 1.24     | including |
| ZDDH0069 | 184.00   | 184.50 | 0.50     | 8.69     | including |
| ZDDH0069 | 234.00   | 258.00 | 24.00    | 1.72     | including |
| ZDDH0069 | 244.00   | 248.00 | 4.00     | 4.94     | including |
| ZDDH0069 | 289.00   | 345.00 | 56.00    | 3.49     | including |
| ZDDH0069 | 292.00   | 337.00 | 45.00    | 4.02     | including |
| ZDDH0069 | 289.00   | 322.00 | 33.00    | 5.07     | including |
| ZDDH0069 | 292.00   | 320.50 | 28.50    | 5.68     | including |
| ZDDH0069 | 314.00   | 320.50 | 6.50     | 7.28     | including |
| ZDDH0069 | 292.00   | 303.00 | 11.00    | 7.73     | including |
| ZDDH0069 | 392.50   | 401.00 | 8.50     | 2.49     | including |
| ZDDH0069 | 398.00   | 400.00 | 2.00     | 7.89     | including |
| ZDDH0070 | 1.50     | 24.00  | 22.50    | 0.34     |           |
| ZDDH0070 | 10.95    | 24.00  | 13.05    | 0.50     | including |
| ZDDH0070 | 18.00    | 21.50  | 3.50     | 0.98     | including |
| ZDDH0070 | 155.00   | 156.00 | 1.00     | 2.28     |           |
| ZDDH0071 | 25.00    | 96.00  | 71.00    | 0.80     |           |
| ZDDH0071 | 41.00    | 43.00  | 2.00     | 1.96     | including |
| ZDDH0071 | 62.79    | 70.00  | 7.21     | 1.04     | including |
| ZDDH0071 | 67.00    | 70.00  | 3.00     | 1.98     | including |
| ZDDH0071 | 88.00    | 96.00  | 8.00     | 4.18     | including |
| ZDDH0071 | 89.75    | 95.00  | 5.25     | 5.97     | including |
| ZDDH0071 | 133.00   | 149.50 | 16.50    | 0.36     |           |
| ZDDH0071 | 139.00   | 146.50 | 7.50     | 0.55     | including |
| ZDDH0071 | 255.00   | 255.50 | 0.50     | 2.69     |           |
| ZDDH0072 | 356.00   | 396.00 | 40.00    | 0.69     |           |
| ZDDH0072 | 366.20   | 372.20 | 6.00     | 1.89     | including |
| ZDDH0072 | 366.20   | 368.00 | 1.80     | 5.50     | including |
| ZDDH0072 | 383.00   | 384.00 | 1.00     | 5.01     | including |
| ZDDH0072 | 393.00   | 394.00 | 1.00     | 8.39     | including |
| ZDDH0073 | 21.40    | 23.00  | 1.60     | 0.62     |           |
| ZDDH0073 | 69.00    | 70.00  | 1.00     | 3.33     |           |
| ZDDH0073 | 93.00    | 95.00  | 2.00     | 2.04     |           |
| ZDDH0073 | 179.00   | 180.00 | 1.00     | 2.73     |           |
| ZDDH0073 | 207.00   | 285.00 | 78.00    | 0.41     |           |
| ZDDH0073 | 207.00   | 209.00 | 2.00     | 7.42     | including |
| ZDDH0073 | 207.00   | 232.06 | 25.06    | 0.74     | including |
| ZDDH0073 | 279.00   | 279.50 | 0.50     | 13.80    | including |
| ZDDH0074 | 89.00    | 116.00 | 27.00    | 1.16     |           |
| ZDDH0074 | 89.00    | 94.00  | 5.00     | 2.15     | including |
| ZDDH0074 | 114.00   | 116.00 | 2.00     | 8.06     | including |

| Hole_ID  | From (m) | To (m) | Interval | Au (g/t) | Comments  |
|----------|----------|--------|----------|----------|-----------|
| ZDDH0075 | 76.00    | 335.90 | 259.90   | 0.70     |           |
| ZDDH0075 | 89.00    | 309.00 | 220.00   | 0.86     | including |
| ZDDH0075 | 97.00    | 100.00 | 3.00     | 2.63     | including |
| ZDDH0075 | 124.00   | 127.00 | 3.00     | 2.40     | including |
| ZDDH0075 | 137.00   | 140.00 | 3.00     | 1.49     | including |
| ZDDH0075 | 153.50   | 155.00 | 1.50     | 5.99     | including |
| ZDDH0075 | 178.00   | 187.00 | 9.00     | 1.02     | including |
| ZDDH0075 | 217.00   | 220.00 | 3.00     | 1.18     | including |
| ZDDH0075 | 236.00   | 238.00 | 2.00     | 1.56     | including |
| ZDDH0075 | 249.00   | 251.00 | 2.00     | 1.03     | including |
| ZDDH0075 | 270.00   | 309.00 | 39.00    | 2.73     | including |
| ZDDH0075 | 270.00   | 296.00 | 26.00    | 3.54     | including |
| ZDDH0075 | 270.00   | 285.50 | 15.50    | 5.49     | including |
| ZDDH0075 | 304.00   | 309.00 | 5.00     | 2.72     | including |
| ZDDH0075 | 328.00   | 338.80 | 10.80    | 1.44     | including |
| ZDDH0075 | 336.00   | 338.80 | 2.80     | 4.97     | including |
| ZDDH0076 | 145.00   | 146.00 | 1.00     | 0.57     |           |
| ZDDH0077 | 65.00    | 82.00  | 17.00    | 0.54     |           |
| ZDDH0077 | 74.00    | 78.00  | 4.00     | 1.13     | including |
| ZDDH0077 | 69.60    | 70.60  | 1.00     | 1.91     | including |
| ZDDH0077 | 121.70   | 122.50 | 0.80     | 1.56     |           |
| ZDDH0078 | 214.00   | 225.00 | 11.00    | 0.67     |           |
| ZDDH0078 | 214.33   | 216.00 | 1.67     | 3.46     | including |
| ZDDH0078 | 263.00   | 265.00 | 2.00     | 1.54     |           |
| ZDDH0078 | 391.00   | 393.00 | 2.00     | 0.92     |           |
| ZDDH0079 | 33.00    | 34.00  | 1.00     | 1.33     |           |
| ZDDH0079 | 70.20    | 72.10  | 1.90     | 1.56     |           |
| ZDDH0079 | 165.60   | 166.00 | 0.40     | 4.26     |           |
| ZDDH0079 | 256.00   | 257.00 | 1.00     | 2.14     |           |
| ZDDH0079 | 272.00   | 273.00 | 1.00     | 1.26     |           |
| ZDDH0079 | 288.00   | 295.00 | 7.00     | 0.91     |           |
| ZDDH0079 | 290.00   | 294.00 | 4.00     | 1.19     | including |
| ZDDH0080 | 108.00   | 121.00 | 13.00    | 1.17     |           |
| ZDDH0080 | 115.50   | 120.00 | 4.50     | 3.08     | including |
| ZDDH0080 | 141.00   | 143.00 | 2.00     | 0.98     |           |
| ZDDH0080 | 254.50   | 255.00 | 0.50     | 1.19     |           |
| ZDDH0080 | 285.05   | 293.00 | 7.95     | 0.46     |           |
| ZDDH0080 | 286.00   | 287.50 | 1.50     | 1.01     | including |
| ZDDH0081 | 82.00    | 110.00 | 28.00    | 1.90     |           |
| ZDDH0081 | 82.00    | 91.00  | 9.00     | 3.76     | including |
| ZDDH0081 | 82.00    | 84.00  | 2.00     | 10.95    | including |
| ZDDH0081 | 88.50    | 91.00  | 2.50     | 4.63     | including |
| ZDDH0081 | 104.00   | 110.00 | 6.00     | 2.91     | including |
| ZDDH0081 | 104.00   | 106.00 | 2.00     | 7.45     | including |
| ZDDH0081 | 201.00   | 202.00 | 1.00     | 1.62     |           |
| ZDDH0082 | 151.00   | 153.00 | 2.00     | 3.30     |           |
| ZDDH0082 | 273.00   | 303.00 | 30.00    | 0.33     |           |
| ZDDH0082 | 294.00   | 295.00 | 1.00     | 2.88     |           |
| ZDDH0082 | 301.00   | 303.00 | 2.00     | 2.43     |           |
| ZDDH0083 | 180.00   | 190.10 | 10.10    | 0.92     |           |
| ZDDH0083 | 180.00   | 184.00 | 4.00     | 1.85     | including |
| ZDDH0083 | 264.00   | 288.00 | 24.00    | 1.63     |           |
| ZDDH0083 | 273.00   | 288.00 | 15.00    | 2.55     | including |
| ZDDH0083 | 273.00   | 280.00 | 7.00     | 4.48     | including |
| ZDDH0083 | 276.00   | 280.00 | 4.00     | 7.25     | including |
| ZDDH0083 | 336.00   | 339.00 | 3.00     | 1.21     |           |
| ZDDH0083 | 362.00   | 363.00 | 1.00     | 3.57     |           |
| ZDDH0083 | 395.00   | 409.00 | 14.00    | 1.11     |           |
| ZDDH0083 | 401.00   | 407.00 | 6.00     | 2.12     | including |
| ZDDH0084 | 118.30   | 203.97 | 85.67    | 1.42     |           |
| ZDDH0084 | 124.00   | 144.70 | 20.70    | 3.81     | including |
| ZDDH0084 | 125.00   | 136.00 | 11.00    | 5.49     | including |
| ZDDH0084 | 162.00   | 169.50 | 7.50     | 3.85     | including |

| Hole_ID  | From (m) | To (m) | Interval | Au (g/t) | Comments  |
|----------|----------|--------|----------|----------|-----------|
| ZDDH0085 | 22.00    | 24.00  | 2.00     | 1.94     |           |
| ZDDH0085 | 85.00    | 153.00 | 68.00    | 0.47     |           |
| ZDDH0085 | 85.00    | 87.00  | 2.00     | 2.34     | including |
| ZDDH0085 | 141.65   | 153.00 | 11.35    | 2.19     |           |
| ZDDH0085 | 147.00   | 151.00 | 4.00     | 5.38     |           |
| ZDDH0085 | 185.00   | 186.00 | 1.00     | 1.62     |           |
| ZDDH0085 | 219.00   | 318.00 | 99.00    | 0.49     |           |
| ZDDH0085 | 219.00   | 224.00 | 5.00     | 2.40     | including |
| ZDDH0085 | 250.00   | 256.00 | 6.00     | 2.25     | including |
| ZDDH0085 | 265.60   | 269.00 | 3.40     | 1.42     | including |
| ZDDH0085 | 290.00   | 292.00 | 2.00     | 1.69     | including |
| ZDDH0085 | 307.00   | 309.00 | 2.00     | 1.46     | including |
| ZDDH0085 | 312.00   | 313.00 | 1.00     | 1.48     | including |
| ZDDH0086 | 15.00    | 16.00  | 1.00     | 0.58     |           |
| ZDDH0086 | 36.00    | 38.00  | 2.00     | 0.30     |           |
| ZDDH0086 | 128.00   | 129.00 | 1.00     | 0.90     |           |
| ZDDH0086 | 135.00   | 137.00 | 2.00     | 0.51     |           |
| ZDDH0087 | 86.00    | 190.00 | 104.00   | 0.76     |           |
| ZDDH0087 | 86.00    | 131.00 | 45.00    | 1.57     | including |
| ZDDH0087 | 86.00    | 116.00 | 30.00    | 2.24     | including |
| ZDDH0087 | 90.00    | 107.00 | 17.00    | 3.62     | including |
| ZDDH0087 | 187.00   | 189.00 | 2.00     | 1.12     |           |
| ZDDH0088 | 9.00     | 10.00  | 1.00     | 0.48     |           |
| ZDDH0088 | 22.50    | 23.50  | 1.00     | 0.49     |           |
| ZDDH0088 | 39.80    | 40.50  | 0.70     | 0.97     |           |
| ZDDH0088 | 90.00    | 92.00  | 2.00     | 0.57     |           |
| ZDDH0088 | 133.50   | 134.00 | 0.50     | 0.91     |           |
| ZDDH0088 | 180.00   | 181.00 | 1.00     | 69.70    |           |
| ZDDH0089 | 28.45    | 37.00  | 8.55     | 0.37     |           |
| ZDDH0089 | 29.00    | 33.00  | 4.00     | 0.49     |           |
| ZDDH0090 | 23.00    | 24.00  | 1.00     | 0.89     |           |
| ZDDH0090 | 43.00    | 83.00  | 40.00    | 0.53     |           |
| ZDDH0090 | 60.00    | 78.00  | 18.00    | 1.05     | including |
| ZDDH0090 | 60.00    | 69.00  | 9.00     | 1.35     | including |
| ZDDH0090 | 148.00   | 182.00 | 34.00    | 0.44     |           |
| ZDDH0090 | 148.00   | 149.00 | 1.00     | 1.86     | including |
| ZDDH0090 | 157.00   | 159.00 | 2.00     | 5.42     | including |
| ZDDH0090 | 223.00   | 224.00 | 1.00     | 3.99     |           |
| ZDDH0091 | 36.00    | 40.00  | 4.00     | 8.04     |           |
| ZDDH0091 | 36.00    | 38.00  | 2.00     | 14.44    | including |
| ZDDH0091 | 73.00    | 85.50  | 12.50    | 0.33     |           |
| ZDDH0091 | 83.00    | 84.50  | 1.50     | 1.42     | including |
| ZDDH0091 | 125.00   | 131.00 | 6.00     | 0.34     |           |
| ZDDH0091 | 172.00   | 173.00 | 1.00     | 0.47     |           |
| ZDDH0092 | 45.00    | 46.00  | 1.00     | 2.24     |           |
| ZDDH0092 | 86.00    | 87.00  | 1.00     | 10.88    |           |
| ZDDH0092 | 121.00   | 123.94 | 2.94     | 1.11     |           |
| ZDDH0092 | 282.00   | 382.00 | 100.00   | 0.48     |           |
| ZDDH0092 | 282.00   | 292.00 | 10.00    | 1.43     | including |
| ZDDH0092 | 305.00   | 326.00 | 21.00    | 0.58     | including |
| ZDDH0092 | 311.00   | 319.00 | 8.00     | 1.08     | including |
| ZDDH0092 | 331.00   | 332.00 | 1.00     | 1.12     | including |
| ZDDH0092 | 369.00   | 371.00 | 2.00     | 2.31     | including |
| ZDDH0092 | 378.00   | 379.00 | 1.00     | 1.25     | including |
| ZDDH0093 | 25.60    | 27.05  | 1.45     | 15.94    |           |
| ZDDH0093 | 116.00   | 117.00 | 1.00     | 1.85     |           |
| ZDDH0093 | 132.00   | 150.00 | 18.00    | 0.51     |           |
| ZDDH0093 | 136.00   | 142.00 | 6.00     | 1.16     | including |
| ZDDH0093 | 165.00   | 175.00 | 10.00    | 0.74     |           |
| ZDDH0093 | 170.00   | 173.00 | 3.00     | 1.86     | including |
| ZDDH0093 | 190.47   | 194.18 | 3.71     | 0.79     |           |
| ZDDH0093 | 268.00   | 270.00 | 2.00     | 1.10     |           |
| ZDDH0093 | 279.00   | 304.00 | 25.00    | 0.77     |           |
| ZDDH0093 | 279.00   | 281.00 | 2.00     | 1.40     | including |
| ZDDH0093 | 290.00   | 304.00 | 14.00    | 1.08     | including |
| ZDDH0093 | 298.00   | 304.00 | 6.00     | 2.24     | including |

| Hole_ID  | From (m) | To (m) | Interval | Au (g/t) | Comments  |
|----------|----------|--------|----------|----------|-----------|
| ZDDH0094 | 37.00    | 40.00  | 3.00     | 2.41     |           |
| ZDDH0094 | 83.49    | 105.00 | 21.51    | 0.71     |           |
| ZDDH0094 | 86.30    | 91.00  | 4.70     | 1.02     |           |
| ZDDH0094 | 100.00   | 105.00 | 5.00     | 1.64     |           |
| ZDDH0094 | 298.00   | 346.00 | 48.00    | 0.67     |           |
| ZDDH0094 | 298.00   | 299.00 | 1.00     | 1.54     | including |
| ZDDH0094 | 319.00   | 323.00 | 4.00     | 6.45     | including |
| ZDDH0094 | 343.00   | 344.00 | 1.00     | 1.03     | including |
| ZDDH0094 | 375.00   | 375.50 | 0.50     | 1.51     |           |
| ZDDH0095 | 106.00   | 108.00 | 2.00     | 0.62     |           |
| ZDDH0095 | 135.95   | 136.50 | 0.55     | 1.52     |           |
| ZDDH0095 | 212.50   | 224.00 | 11.50    | 1.13     |           |
| ZDDH0095 | 212.50   | 214.07 | 1.57     | 7.37     | including |
| ZDDH0096 | 29.00    | 47.00  | 18.00    | 0.46     |           |
| ZDDH0096 | 39.00    | 46.00  | 7.00     | 0.79     | including |
| ZDDH0096 | 112.00   | 113.50 | 1.50     | 0.98     |           |
| ZDDH0096 | 155.00   | 157.50 | 2.50     | 0.83     |           |
| ZDDH0096 | 185.00   | 187.00 | 2.00     | 1.59     |           |
| ZDDH0096 | 190.00   | 191.00 | 1.00     | 1.41     |           |
| ZDDH0096 | 261.00   | 267.00 | 6.00     | 0.64     |           |
| ZDDH0096 | 261.00   | 262.00 | 1.00     | 2.21     | including |
| ZDDH0097 | 9.00     | 10.00  | 1.00     | 2.95     |           |
| ZDDH0097 | 89.00    | 90.00  | 1.00     | 2.15     |           |
| ZDDH0098 | 1.20     | 3.00   | 1.80     | 1.25     |           |
| ZDDH0098 | 74.00    | 124.00 | 50.00    | 1.73     |           |
| ZDDH0098 | 74.00    | 76.00  | 2.00     | 13.95    | including |
| ZDDH0098 | 97.00    | 103.00 | 6.00     | 8.47     | including |
| ZDDH0098 | 166.00   | 203.00 | 37.00    | 0.62     |           |
| ZDDH0098 | 168.15   | 172.82 | 4.67     | 1.88     | including |
| ZDDH0098 | 190.00   | 203.00 | 13.00    | 0.98     | including |
| ZDDH0098 | 199.00   | 203.00 | 4.00     | 2.40     | including |
| ZDDH0099 | 10.00    | 11.00  | 1.00     | 3.57     |           |
| ZDDH0099 | 90.80    | 157.00 | 66.20    | 0.53     |           |
| ZDDH0099 | 96.00    | 111.00 | 15.00    | 1.36     |           |
| ZDDH0099 | 138.00   | 139.00 | 1.00     | 1.13     |           |
| ZDDH0099 | 148.00   | 148.80 | 0.80     | 3.43     |           |
| ZDDH0099 | 178.00   | 178.90 | 0.90     | 6.53     |           |
| ZDDH0099 | 251.00   | 252.00 | 1.00     | 1.11     |           |
| ZDDH0099 | 319.40   | 328.00 | 8.60     | 0.58     |           |
| ZDDH0099 | 319.40   | 322.00 | 2.60     | 1.32     |           |
| ZDDH0099 | 342.00   | 343.00 | 1.00     | 1.13     |           |
| ZDDH0100 | 8.00     | 9.00   | 1.00     | 1.08     |           |
| ZDDH0100 | 21.00    | 56.00  | 35.00    | 1.07     |           |
| ZDDH0100 | 29.10    | 54.50  | 25.40    | 1.39     | including |
| ZDDH0100 | 29.10    | 31.00  | 1.90     | 10.30    | including |
| ZDDH0100 | 105.00   | 106.00 | 1.00     | 5.86     |           |
| ZDDH0100 | 144.50   | 157.00 | 12.50    | 0.75     |           |
| ZDDH0100 | 147.00   | 148.00 | 1.00     | 4.99     | including |
| ZDDH0100 | 155.00   | 157.00 | 2.00     | 1.51     | including |
| ZDDH0100 | 193.00   | 194.00 | 1.00     | 1.45     |           |
| ZDDH0101 | 80.00    | 81.87  | 1.87     | 0.82     |           |
| ZDDH0101 | 133.00   | 202.00 | 69.00    | 0.95     |           |
| ZDDH0101 | 133.00   | 180.00 | 47.00    | 1.21     | including |
| ZDDH0101 | 136.00   | 159.40 | 23.40    | 1.76     | including |
| ZDDH0101 | 196.00   | 197.00 | 1.00     | 4.14     | including |
| ZDDH0101 | 258.00   | 286.56 | 28.56    | 1.30     |           |
| ZDDH0101 | 275.50   | 285.00 | 9.50     | 3.05     | including |
| ZDDH0101 | 280.00   | 284.00 | 4.00     | 5.94     | including |
| ZDDH0102 | 187.50   | 202.00 | 14.50    | 0.28     |           |
| ZDDH0102 | 189.00   | 190.00 | 1.00     | 1.46     | including |
| ZDDH0103 | 4.50     | 9.00   | 4.50     | 0.35     |           |
| ZDDH0103 | 31.20    | 31.60  | 0.40     | 3.48     |           |
| ZDDH0103 | 88.00    | 102.00 | 14.00    | 1.42     |           |
| ZDDH0103 | 88.00    | 93.60  | 5.60     | 3.01     | including |

| Hole_ID  | From (m) | To (m) | Interval | Au (g/t) | Comments  |
|----------|----------|--------|----------|----------|-----------|
| ZDDH0103 | 133.00   | 133.76 | 0.76     | 1.50     |           |
| ZDDH0103 | 140.00   | 141.00 | 1.00     | 4.26     |           |
| ZDDH0103 | 168.00   | 180.00 | 12.00    | 0.40     |           |
| ZDDH0103 | 178.70   | 180.00 | 1.30     | 1.76     | including |
| ZDDH0103 | 226.00   | 228.00 | 2.00     | 0.56     |           |
| ZDDH0104 | 174.91   | 216.00 | 41.09    | 0.95     |           |
| ZDDH0104 | 174.91   | 197.00 | 22.09    | 1.50     | including |
| ZDDH0104 | 183.00   | 197.00 | 14.00    | 1.87     | including |
| ZDDH0105 | 284.00   | 285.00 | 1.00     | 0.69     |           |
| ZDDH0105 | 375.00   | 376.00 | 1.00     | 7.55     |           |
| ZDDH0105 | 414.00   | 415.00 | 1.00     | 1.12     |           |
| ZDDH0107 | 14.10    | 16.28  | 2.18     | 1.15     |           |
| ZDDH0107 | 35.70    | 48.00  | 12.30    | 0.70     |           |
| ZDDH0107 | 37.00    | 39.00  | 2.00     | 2.31     | including |
| ZDDH0107 | 46.00    | 48.00  | 2.00     | 1.08     |           |
| ZDDH0107 | 359.00   | 382.00 | 23.00    | 0.57     |           |
| ZDDH0107 | 372.00   | 381.00 | 9.00     | 1.16     | including |
| ZDDH0107 | 353.00   | 354.00 | 1.00     | 1.28     |           |
| ZDDH0108 | 25.00    | 26.00  | 1.00     | 0.52     |           |
| ZDDH0108 | 53.70    | 142.00 | 88.30    | 0.30     |           |
| ZDDH0108 | 60.00    | 61.00  | 1.00     | 3.95     |           |
| ZDDH0108 | 72.41    | 76.00  | 3.59     | 1.22     |           |
| ZDDH0108 | 90.00    | 93.00  | 3.00     | 2.17     |           |
| ZDDH0108 | 114.00   | 114.40 | 0.40     | 1.24     |           |
| ZDDH0110 | 80.00    | 100.00 | 20.00    | 1.48     |           |
| ZDDH0110 | 80.00    | 92.00  | 12.00    | 1.99     | including |
| ZDDH0110 | 82.50    | 88.00  | 5.50     | 3.37     | including |
| ZDDH0110 | 114.00   | 120.00 | 6.00     | 0.53     |           |
| ZDDH0110 | 117.00   | 118.00 | 1.00     | 1.39     | including |
| ZDDH0110 | 186.00   | 187.00 | 1.00     | 1.10     |           |
| ZDDH0110 | 194.00   | 195.00 | 1.00     | 1.33     |           |
| ZDDH0111 | 8.00     | 130.00 | 122.00   | 0.43     |           |
| ZDDH0111 | 8.00     | 10.00  | 2.00     | 0.71     | including |
| ZDDH0111 | 19.00    | 27.00  | 8.00     | 0.65     | including |
| ZDDH0111 | 21.00    | 22.00  | 1.00     | 2.30     | including |
| ZDDH0111 | 27.00    | 28.00  | 1.00     | 1.57     | including |
| ZDDH0111 | 43.00    | 54.00  | 11.00    | 0.34     | including |
| ZDDH0111 | 85.00    | 86.00  | 1.00     | 3.01     | including |
| ZDDH0111 | 98.00    | 109.00 | 11.00    | 2.16     | including |
| ZDDH0111 | 120.00   | 125.00 | 5.00     | 1.35     | including |
| ZDDH0112 | 130.00   | 132.00 | 2.00     | 0.47     |           |
| ZDDH0112 | 154.00   | 155.00 | 1.00     | 11.90    |           |
| ZDDH0112 | 240.00   | 241.00 | 1.00     | 1.08     |           |
| ZDDH0114 | 26.50    | 27.20  | 0.70     | 0.40     |           |
| ZDDH0114 | 47.20    | 53.00  | 5.80     | 0.47     |           |
| ZDDH0114 | 49.00    | 51.00  | 2.00     | 0.85     |           |
| ZDDH0114 | 69.00    | 71.00  | 2.00     | 0.44     |           |
| ZDDH0114 | 97.00    | 106.90 | 9.90     | 0.57     |           |
| ZDDH0114 | 103.00   | 105.00 | 2.00     | 1.74     | including |
| ZDDH0114 | 164.00   | 165.00 | 1.00     | 1.00     |           |
| ZDDH0114 | 223.00   | 229.00 | 6.00     | 2.29     |           |
| ZDDH0114 | 224.00   | 227.00 | 3.00     | 4.36     | including |
| ZDDH0115 | 235.00   | 236.00 | 1.00     | 0.43     |           |
| ZDDH0115 | 311.00   | 318.00 | 7.00     | 1.00     |           |
| ZDDH0115 | 312.00   | 313.00 | 1.00     | 3.33     |           |
| ZDDH0116 | 59.00    | 60.00  | 1.00     | 5.76     |           |
| ZDDH0116 | 65.88    | 67.27  | 1.39     | 0.49     |           |
| ZDDH0117 | 162.00   | 163.00 | 1.00     | 1.20     |           |
| ZDDH0117 | 190.80   | 201.00 | 10.20    | 0.65     |           |
| ZDDH0117 | 190.80   | 191.50 | 0.70     | 5.03     | including |
| ZDDH0117 | 198.00   | 201.00 | 3.00     | 1.00     | including |
| ZDDH0117 | 225.00   | 227.00 | 2.00     | 0.46     |           |
| ZDDH0117 | 261.00   | 285.00 | 24.00    | 0.58     |           |
| ZDDH0117 | 268.00   | 281.00 | 13.00    | 0.88     | including |

| Hole_ID  | From (m) | To (m) | Interval | Au (g/t) | Comments       |
|----------|----------|--------|----------|----------|----------------|
| ZDDH0117 | 268.00   | 270.00 | 2.00     | 1.50     | including      |
| ZDDH0117 | 280.00   | 281.00 | 1.00     | 4.12     | including      |
| ZDDH0118 |          |        |          |          | No Significant |
| ZDDH0119 | 4.60     | 6.60   | 2.00     | 0.52     |                |
| ZDDH0119 | 20.00    | 26.00  | 6.00     | 0.50     |                |
| ZDDH0119 | 20.00    | 21.00  | 1.00     | 1.69     |                |
| ZDDH0119 | 261.00   | 262.00 | 1.00     | 1.18     |                |
| ZDDH0119 | 269.00   | 270.00 | 1.00     | 1.48     |                |
| ZDDH0119 | 326.00   | 374.00 | 48.00    | 0.53     |                |
| ZDDH0119 | 350.00   | 374.00 | 24.00    | 1.02     | including      |
| ZDDH0119 | 355.00   | 374.00 | 19.00    | 1.22     | including      |
| ZDDH0119 | 355.00   | 359.50 | 4.50     | 2.97     | including      |
| ZDDH0119 | 365.00   | 366.00 | 1.00     | 2.64     | including      |
| ZDDH0119 | 373.00   | 374.00 | 1.00     | 4.22     | including      |
| ZDDH0120 | 229.00   | 232.00 | 3.00     | 1.47     |                |
| ZDDH0120 | 317.00   | 318.00 | 1.00     | 15.30    |                |
| ZDDH0120 | 351.00   | 352.00 | 1.00     | 1.16     |                |
| ZDDH0120 | 371.00   | 378.00 | 7.00     | 0.61     |                |
| ZDDH0120 | 376.00   | 377.00 | 1.00     | 1.39     | including      |
| ZDDH0120 | 383.00   | 384.00 | 1.00     | 1.03     |                |
| ZDDH0120 | 387.00   | 388.00 | 1.00     | 1.27     |                |
| ZDDH0120 | 396.00   | 397.00 | 1.00     | 1.02     |                |
| ZDDH0120 | 412.00   | 415.00 | 3.00     | 0.41     |                |
| ZDDH0121 | 35.00    | 41.00  | 6.00     | 0.47     |                |
| ZDDH0121 | 35.00    | 36.00  | 1.00     | 1.07     | including      |
| ZDDH0121 | 60.00    | 91.50  | 31.50    | 0.34     |                |
| ZDDH0121 | 66.00    | 73.50  | 7.50     | 0.59     | including      |
| ZDDH0121 | 66.00    | 67.00  | 1.00     | 1.11     | including      |
| ZDDH0121 | 72.50    | 73.20  | 0.70     | 3.27     | including      |
| ZDDH0121 | 79.00    | 80.00  | 1.00     | 1.40     | including      |
| ZDDH0121 | 86.50    | 88.00  | 1.50     | 2.31     | including      |
| ZDDH0121 | 230.00   | 231.00 | 1.00     | 2.94     | including      |
| ZDDH0122 | 3.00     | 7.10   | 4.10     | 0.38     |                |
| ZDDH0122 | 36.50    | 37.39  | 0.89     | 0.87     |                |
| ZDDH0122 | 43.00    | 44.00  | 1.00     | 0.87     |                |
| ZDDH0122 | 85.00    | 85.65  | 0.65     | 1.11     |                |
| ZDDH0122 | 155.00   | 156.00 | 1.00     | 0.84     |                |
| ZDDH0123 | 70.00    | 98.00  | 28.00    | 0.87     |                |
| ZDDH0123 | 76.00    | 77.00  | 1.00     | 1.93     | including      |
| ZDDH0123 | 84.07    | 87.00  | 2.93     | 5.38     | including      |
| ZDDH0123 | 200.00   | 204.00 | 4.00     | 0.85     |                |
| ZDDH0123 | 203.00   | 204.00 | 1.00     | 1.48     | including      |
| ZDDH0123 | 215.00   | 221.00 | 6.00     | 1.51     |                |
| ZDDH0123 | 242.60   | 243.20 | 0.60     | 1.16     |                |
| ZDDH0123 | 360.00   | 361.00 | 1.00     | 3.55     |                |
| ZDDH0123 | 383.00   | 384.00 | 1.00     | 0.78     |                |
| ZDDH0124 | 23.40    | 23.90  | 0.50     | 2.02     |                |
| ZDDH0124 | 99.00    | 100.95 | 1.95     | 0.88     |                |
| ZDDH0124 | 99.00    | 100.00 | 1.00     | 1.50     | including      |
| ZDDH0124 | 152.00   | 223.00 | 71.00    | 1.63     |                |
| ZDDH0124 | 152.00   | 191.00 | 39.00    | 2.59     | including      |
| ZDDH0124 | 152.00   | 171.00 | 19.00    | 5.07     | including      |
| ZDDH0124 | 152.00   | 159.00 | 7.00     | 11.98    | including      |
| ZDDH0124 | 221.00   | 223.00 | 2.00     | 6.43     | including      |
| ZDDH0124 | 256.00   | 257.00 | 1.00     | 1.17     |                |
| ZDDH0125 | 263.90   | 264.35 | 0.45     | 1.07     |                |
| ZDDH0125 | 316.50   | 369.00 | 52.50    | 1.37     |                |
| ZDDH0125 | 338.00   | 359.00 | 21.00    | 2.72     | including      |
| ZDDH0125 | 344.00   | 355.00 | 11.00    | 4.14     | including      |
| ZDDH0125 | 317.00   | 318.50 | 1.50     | 1.67     | including      |
| ZDDH0125 | 323.50   | 324.10 | 0.60     | 1.39     | including      |
| ZDDH0125 | 327.00   | 329.00 | 2.00     | 1.07     | including      |
| ZDDH0125 | 344.00   | 347.00 | 3.00     | 5.69     | including      |
| ZDDH0125 | 349.00   | 355.00 | 6.00     | 4.39     | including      |

| Hole_ID  | From (m) | To (m) | Interval | Au (g/t) | Comments  |
|----------|----------|--------|----------|----------|-----------|
| ZDDH0126 | 9.00     | 38.00  | 29.00    | 0.30     |           |
| ZDDH0126 | 19.00    | 20.10  | 1.10     | 1.22     | including |
| ZDDH0126 | 35.77    | 37.00  | 1.23     | 3.58     | including |
| ZDDH0126 | 93.00    | 128.00 | 35.00    | 0.40     |           |
| ZDDH0126 | 97.00    | 103.00 | 6.00     | 1.63     | including |
| ZDDH0126 | 144.00   | 145.00 | 1.00     | 2.95     |           |
| ZDDH0126 | 251.00   | 262.00 | 11.00    | 0.83     |           |
| ZDDH0126 | 251.00   | 257.00 | 6.00     | 1.38     | including |
| ZDDH0126 | 278.90   | 282.00 | 3.10     | 0.51     |           |
| ZDDH0126 | 300.00   | 301.00 | 1.00     | 2.63     |           |
| ZDDH0126 | 325.00   | 388.00 | 63.00    | 0.39     |           |
| ZDDH0126 | 337.00   | 338.00 | 1.00     | 1.02     | including |
| ZDDH0126 | 350.00   | 353.90 | 3.90     | 1.09     | including |
| ZDDH0126 | 370.00   | 371.00 | 1.00     | 1.13     | including |
| ZDDH0126 | 377.63   | 388.00 | 10.37    | 1.04     | including |
| ZDDH0126 | 385.00   | 388.00 | 3.00     | 2.76     | including |
| ZDDH0126 | 410.00   | 411.00 | 1.00     | 0.95     |           |
| ZDDH0126 | 415.00   | 416.00 | 1.00     | 1.24     |           |
| ZDDH0126 | 463.00   | 469.00 | 6.00     | 0.78     |           |
| ZDDH0126 | 464.00   | 466.00 | 2.00     | 1.24     |           |
| ZDDH0126 | 468.00   | 469.00 | 1.00     | 1.94     |           |
| ZDDH0127 | 20.00    | 49.00  | 29.00    | 0.57     |           |
| ZDDH0127 | 23.00    | 24.00  | 1.00     | 2.96     | including |
| ZDDH0127 | 45.00    | 46.50  | 1.50     | 3.77     | including |
| ZDDH0127 | 97.40    | 102.00 | 4.60     | 0.47     |           |
| ZDDH0127 | 113.00   | 123.00 | 10.00    | 0.63     |           |
| ZDDH0127 | 116.20   | 117.00 | 0.80     | 1.55     | including |
| ZDDH0127 | 137.00   | 138.17 | 1.17     | 14.39    |           |
| ZDDH0127 | 205.35   | 206.20 | 0.85     | 2.06     |           |
| ZDDH0127 | 248.00   | 249.00 | 1.00     | 1.18     |           |
| ZDDH0127 | 305.00   | 307.00 | 2.00     | 0.75     |           |
| ZDDH0128 | 78.29    | 79.20  | 0.91     | 7.59     |           |
| ZDDH0128 | 103.00   | 110.00 | 7.00     | 3.22     |           |
| ZDDH0128 | 106.00   | 108.90 | 2.90     | 6.95     | including |
| ZDDH0128 | 249.00   | 250.00 | 1.00     | 3.04     |           |
| ZDDH0128 | 289.00   | 290.00 | 1.00     | 1.08     |           |
| ZDDH0128 | 316.00   | 317.00 | 1.00     | 1.77     |           |
| ZDDH0128 | 368.00   | 371.00 | 3.00     | 3.87     |           |
| ZDDH0129 | 272.00   | 276.20 | 4.20     | 0.41     |           |
| ZDDH0129 | 324.00   | 350.00 | 26.00    | 0.49     |           |
| ZDDH0129 | 324.00   | 325.00 | 1.00     | 1.57     | including |
| ZDDH0129 | 330.00   | 331.00 | 1.00     | 0.91     | including |
| ZDDH0129 | 331.50   | 332.00 | 0.50     | 2.21     | including |
| ZDDH0129 | 341.00   | 342.00 | 1.00     | 1.53     | including |
| ZDDH0129 | 347.00   | 348.00 | 1.00     | 5.13     | including |
| ZDDH0130 | 20.00    | 29.00  | 9.00     | 0.57     |           |
| ZDDH0130 | 20.00    | 21.00  | 1.00     | 1.91     |           |
| ZDDH0130 | 28.00    | 29.00  | 1.00     | 2.04     |           |
| ZDDH0130 | 230.00   | 231.00 | 1.00     | 3.24     |           |
| ZDDH0131 | 93.00    | 95.00  | 2.00     | 0.60     |           |
| ZDDH0131 | 119.00   | 144.00 | 25.00    | 2.11     |           |
| ZDDH0131 | 120.00   | 120.59 | 0.59     | 63.10    | including |
| ZDDH0131 | 136.00   | 140.00 | 4.00     | 2.46     | including |
| ZDDH0131 | 176.00   | 177.00 | 1.00     | 38.30    |           |
| ZDDH0131 | 180.00   | 181.00 | 1.00     | 0.84     |           |
| ZDDH0131 | 190.00   | 191.00 | 1.00     | 0.55     |           |
| ZDDH0131 | 197.00   | 198.00 | 1.00     | 0.51     |           |
| ZDDH0131 | 228.00   | 237.00 | 9.00     | 0.47     |           |
| ZDDH0131 | 234.00   | 235.00 | 1.00     | 1.94     | including |
| ZDDH0131 | 290.00   | 291.00 | 1.00     | 1.02     |           |
| ZDDH0131 | 298.00   | 299.00 | 1.00     | 0.72     |           |
| ZDDH0131 | 326.00   | 327.00 | 1.00     | 0.94     |           |
| ZDDH0131 | 343.00   | 344.00 | 1.00     | 0.89     |           |
| ZDDH0131 | 457.00   | 458.00 | 1.00     | 1.00     |           |

| Hole_ID  | From (m) | To (m) | Interval | Au (g/t) | Comments  |
|----------|----------|--------|----------|----------|-----------|
| ZDDH0132 | 148.00   | 149.00 | 1.00     | 1.20     |           |
| ZDDH0133 | 47.00    | 48.00  | 1.00     | 0.92     |           |
| ZDDH0133 | 112.00   | 117.00 | 5.00     | 0.41     |           |
| ZDDH0133 | 115.00   | 116.00 | 1.00     | 1.22     | including |
| ZDDH0133 | 138.00   | 139.00 | 1.00     | 1.21     |           |
| ZDDH0133 | 154.00   | 155.00 | 1.00     | 1.39     |           |
| ZDDH0133 | 229.00   | 230.00 | 1.00     | 4.42     |           |
| ZDDH0133 | 249.00   | 318.00 | 69.00    | 0.54     |           |
| ZDDH0133 | 267.00   | 294.00 | 27.00    | 1.18     | including |
| ZDDH0133 | 267.00   | 275.00 | 8.00     | 3.17     | including |
| ZDDH0133 | 292.00   | 293.00 | 1.00     | 2.31     | including |
| ZDDH0133 | 333.00   | 334.00 | 1.00     | 1.44     |           |
| ZDDH0133 | 339.00   | 340.00 | 1.00     | 0.97     |           |
| ZDDH0133 | 355.00   | 356.00 | 1.00     | 1.19     |           |
| ZDDH0133 | 404.00   | 405.00 | 1.00     | 1.72     |           |
| ZDDH0133 | 438.00   | 439.00 | 1.00     | 0.96     |           |
| ZDDH0135 | 203.00   | 205.00 | 2.00     | 0.52     |           |
| ZDDH0135 | 299.00   | 300.00 | 1.00     | 1.21     |           |
| ZDDH0135 | 334.00   | 346.00 | 12.00    | 3.34     |           |
| ZDDH0135 | 334.00   | 335.50 | 1.50     | 25.22    | including |
| ZDDH0135 | 345.00   | 346.00 | 1.00     | 1.29     | including |
| ZDDH0136 | 56.00    | 57.00  | 1.00     | 1.05     |           |
| ZDDH0136 | 221.00   | 222.00 | 1.00     | 0.57     |           |
| ZDDH0136 | 239.00   | 346.00 | 107.00   | 0.49     |           |
| ZDDH0136 | 252.00   | 253.00 | 1.00     | 1.10     | including |
| ZDDH0136 | 287.00   | 324.00 | 37.00    | 1.01     | including |
| ZDDH0136 | 309.00   | 315.00 | 6.00     | 1.45     | including |
| ZDDH0136 | 387.50   | 388.05 | 0.55     | 3.11     |           |
| ZDDH0136 | 415.00   | 416.00 | 1.00     | 2.89     |           |
| ZDDH0136 | 445.00   | 447.00 | 2.00     | 3.53     |           |
| ZDDH0149 | 97.50    | 118.78 | 21.28    | 0.34     |           |
| ZDDH0149 | 105.00   | 109.50 | 4.50     | 1.14     | including |
| ZDDH0149 | 108.00   | 109.50 | 1.50     | 2.16     | including |
| ZDDH0149 | 243.00   | 279.00 | 36.00    | 0.40     |           |
| ZDDH0149 | 248.00   | 259.00 | 11.00    | 0.81     | including |
| ZDDH0149 | 249.00   | 253.00 | 4.00     | 1.69     | including |
| ZDDH0149 | 249.00   | 251.00 | 2.00     | 2.38     | including |
| ZDDH0149 | 272.95   | 275.50 | 2.55     | 0.96     |           |
| ZDDH0149 | 272.95   | 274.00 | 1.05     | 1.77     | including |

\*For full results for holes ZDDH00001 to ZDDH00016, refer to Plukka Ltd Prospectus 30 October 2019. For results of ZDDH00017 to ZDDH00127 refer to TSO:ASX announcements 6 March, 12 March, 27 April, 6 May, 27 May 2020, 10 June 2020, 26 August 2020, 4 September 2020, 9 October 2020, 23 October 2020, 4 November 2020, 24 November 2020, 16 December 2020, 22 December 2020, 11 January 2021, 27 January 2021, 19 February 2021, 5 March 2021, 23 March 2021, 29 March 2021, 29 April 2021, 25 May 2021, 11 June 2021 and 25 June 2021.

## Appendix 2 – Concession Schedule

### El Zorro Gold Project Exploration Concessions (85%\* Tesoro)

| Total | Concession Name     | Date of Expiration | Size (ha) | Concession type |
|-------|---------------------|--------------------|-----------|-----------------|
| 1     | SIERRA PATACONES 1  | application        | 300       | Exploration     |
| 2     | SIERRA PATACONES 2  | application        | 300       | Exploration     |
| 3     | SIERRA PATACONES 3  | application        | 300       | Exploration     |
| 4     | SIERRA PATACONES 4  | application        | 300       | Exploration     |
| 5     | SIERRA PATACONES 5  | application        | 300       | Exploration     |
| 6     | SIERRA PATACONES 6  | application        | 300       | Exploration     |
| 7     | SIERRA PATACONES 7  | application        | 300       | Exploration     |
| 8     | SIERRA PATACONES 8  | application        | 300       | Exploration     |
| 9     | SIERRA PATACONES 9  | application        | 300       | Exploration     |
| 10    | SIERRA PATACONES 10 | application        | 300       | Exploration     |
| 11    | SIERRA PATACONES 11 | application        | 300       | Exploration     |
| 12    | SIERRA PATACONES 12 | application        | 300       | Exploration     |
| 13    | SIERRA PATACONES 13 | application        | 300       | Exploration     |
| 14    | SIERRA PATACONES 14 | application        | 300       | Exploration     |
| 15    | SIERRA PATACONES 15 | application        | 300       | Exploration     |
| 16    | SIERRA PATACONES 20 | application        | 300       | Exploration     |
| 17    | SIERRA PATACONES 19 | application        | 300       | Exploration     |
| 18    | SIERRA PATACONES 18 | application        | 300       | Exploration     |
| 19    | SIERRA PATACONES 17 | application        | 300       | Exploration     |
| 20    | SIERRA PATACONES 16 | application        | 300       | Exploration     |
| 21    | SIERRA PATACONES 21 | application        | 300       | Exploration     |
| 22    | SIERRA PATACONES 22 | application        | 300       | Exploration     |
| 23    | SIERRA PATACONES 23 | application        | 300       | Exploration     |
| 24    | SIERRA PATACONES 24 | application        | 300       | Exploration     |
| 25    | SIERRA PATACONES 25 | application        | 300       | Exploration     |
| 26    | SIERRA PATACONES 26 | application        | 300       | Exploration     |
| 27    | SIERRA PATACONES 27 | application        | 300       | Exploration     |
| 28    | SIERRA PATACONES 28 | application        | 300       | Exploration     |
| 29    | SIERRA PATACONES 29 | application        | 300       | Exploration     |
| 30    | SIERRA PATACONES 30 | application        | 300       | Exploration     |
| 31    | SIERRA PATACONES 31 | application        | 300       | Exploration     |
| 32    | SIERRA PATACONES 32 | application        | 300       | Exploration     |
| 33    | SIERRA PATACONES 33 | application        | 300       | Exploration     |
| 34    | SIERRA PATACONES 34 | application        | 300       | Exploration     |
| 35    | SIERRA PATACONES 35 | application        | 300       | Exploration     |
| 36    | SIERRA PATACONES 42 | application        | 300       | Exploration     |
| 37    | SIERRA PATACONES 41 | application        | 300       | Exploration     |
| 38    | SIERRA PATACONES 40 | application        | 300       | Exploration     |
| 39    | SIERRA PATACONES 39 | application        | 300       | Exploration     |
| 40    | SIERRA PATACONES 38 | application        | 300       | Exploration     |
| 41    | SIERRA PATACONES 37 | application        | 300       | Exploration     |
| 42    | SIERRA PATACONES 36 | application        | 300       | Exploration     |
| 43    | SIERRA PATACONES 43 | application        | 300       | Exploration     |
| 44    | SIERRA PATACONES 44 | application        | 300       | Exploration     |
| 45    | SIERRA PATACONES 45 | application        | 300       | Exploration     |
| 46    | SIERRA PATACONES 46 | application        | 300       | Exploration     |
| 47    | SIERRA PATACONES 47 | application        | 300       | Exploration     |
| 48    | SIERRA PATACONES 48 | application        | 300       | Exploration     |
| 49    | SIERRA PATACONES 49 | application        | 300       | Exploration     |
| 50    | SIERRA PATACONES 50 | application        | 300       | Exploration     |
| 51    | SIERRA PATACONES 51 | application        | 300       | Exploration     |
| 52    | SIERRA PATACONES 53 | application        | 300       | Exploration     |
| 53    | SIERRA PATACONES 54 | application        | 300       | Exploration     |
| 54    | SIERRA PATACONES 55 | application        | 300       | Exploration     |
| 55    | SIERRA PATACONES 56 | application        | 300       | Exploration     |
| 56    | SIERRA PATACONES 57 | application        | 300       | Exploration     |
| 57    | SIERRA PATACONES 62 | application        | 300       | Exploration     |

|     |                     |                    |     |             |
|-----|---------------------|--------------------|-----|-------------|
| 58  | SIERRA PATACONES 61 | <b>application</b> | 300 | Exploration |
| 59  | SIERRA PATACONES 60 | <b>application</b> | 300 | Exploration |
| 60  | SIERRA PATACONES 59 | <b>application</b> | 300 | Exploration |
| 61  | SIERRA PATACONES 58 | <b>application</b> | 300 | Exploration |
| 62  | SIERRA PATACONES 63 | <b>application</b> | 300 | Exploration |
| 63  | SIERRA PATACONES 64 | <b>application</b> | 300 | Exploration |
| 64  | SIERRA PATACONES 65 | <b>application</b> | 300 | Exploration |
| 65  | SIERRA PATACONES 66 | <b>application</b> | 300 | Exploration |
| 66  | SIERRA PATACONES 67 | <b>application</b> | 300 | Exploration |
| 67  | SIERRA PATACONES 68 | <b>application</b> | 300 | Exploration |
| 68  | SIERRA PATACONES 69 | <b>application</b> | 300 | Exploration |
| 69  | SIERRA PATACONES 70 | <b>application</b> | 300 | Exploration |
| 70  | SIERRA PATACONES 71 | <b>application</b> | 300 | Exploration |
| 71  | SIERRA PATACONES 72 | <b>application</b> | 300 | Exploration |
| 72  | SIERRA PATACONES 73 | <b>application</b> | 300 | Exploration |
| 73  | SIERRA PATACONES 74 | <b>application</b> | 300 | Exploration |
| 74  | SIERRA PATACONES 75 | <b>application</b> | 300 | Exploration |
| 75  | SIERRA PATACONES 76 | <b>application</b> | 300 | Exploration |
| 76  | SIERRA PATACONES 77 | <b>application</b> | 300 | Exploration |
| 77  | SIERRA PATACONES 84 | <b>application</b> | 300 | Exploration |
| 78  | SIERRA PATACONES 83 | <b>application</b> | 300 | Exploration |
| 79  | SIERRA PATACONES 82 | <b>application</b> | 300 | Exploration |
| 80  | SIERRA PATACONES 81 | <b>application</b> | 300 | Exploration |
| 81  | SIERRA PATACONES 80 | <b>application</b> | 300 | Exploration |
| 82  | SIERRA PATACONES 79 | <b>application</b> | 300 | Exploration |
| 83  | SIERRA PATACONES 78 | <b>application</b> | 300 | Exploration |
| 84  | SIERRA PATACONES 52 | <b>application</b> | 300 | Exploration |
| 85  | GOLD STORE 72       | <b>application</b> | 300 | Exploration |
| 86  | GOLD STORE 71       | <b>application</b> | 300 | Exploration |
| 87  | GOLD STORE 70       | <b>application</b> | 300 | Exploration |
| 88  | GOLD STORE 69       | <b>application</b> | 300 | Exploration |
| 89  | GOLD STORE 68       | <b>application</b> | 300 | Exploration |
| 90  | GOLD STORE 67       | <b>application</b> | 300 | Exploration |
| 91  | GOLD STORE 66       | <b>application</b> | 300 | Exploration |
| 92  | GOLD STORE 1        | <b>application</b> | 300 | Exploration |
| 93  | GOLD STORE 2        | <b>application</b> | 300 | Exploration |
| 94  | GOLD STORE 3        | <b>application</b> | 300 | Exploration |
| 95  | GOLD STORE 4        | <b>application</b> | 300 | Exploration |
| 96  | GOLD STORE 5        | <b>application</b> | 300 | Exploration |
| 97  | GOLD STORE 6        | <b>application</b> | 300 | Exploration |
| 98  | GOLD STORE 7        | <b>application</b> | 300 | Exploration |
| 99  | GOLD STORE 8        | <b>application</b> | 300 | Exploration |
| 100 | GOLD STORE 9        | <b>application</b> | 300 | Exploration |
| 101 | GOLD STORE 10       | <b>application</b> | 300 | Exploration |
| 102 | GOLD STORE 11       | <b>application</b> | 300 | Exploration |
| 103 | GOLD STORE 12       | <b>application</b> | 300 | Exploration |
| 104 | GOLD STORE 13       | <b>application</b> | 300 | Exploration |
| 105 | GOLD STORE 14       | <b>application</b> | 300 | Exploration |
| 106 | GOLD STORE 15       | <b>application</b> | 300 | Exploration |
| 107 | GOLD STORE 16       | <b>application</b> | 300 | Exploration |
| 108 | GOLD STORE 17       | <b>application</b> | 300 | Exploration |
| 109 | GOLD STORE 18       | <b>application</b> | 300 | Exploration |
| 110 | GOLD STORE 19       | <b>application</b> | 300 | Exploration |
| 111 | GOLD STORE 20       | <b>application</b> | 300 | Exploration |
| 112 | GOLD STORE 21       | <b>application</b> | 300 | Exploration |
| 113 | GOLD STORE 22       | <b>application</b> | 300 | Exploration |
| 114 | GOLD STORE 23       | <b>application</b> | 300 | Exploration |
| 115 | GOLD STORE 24       | <b>application</b> | 300 | Exploration |
| 116 | GOLD STORE 25       | <b>application</b> | 300 | Exploration |
| 117 | GOLD STORE 26       | <b>application</b> | 300 | Exploration |
| 118 | GOLD STORE 27       | <b>application</b> | 300 | Exploration |



|     |                 |                    |     |             |
|-----|-----------------|--------------------|-----|-------------|
| 119 | GOLD STORE 28   | <b>application</b> | 300 | Exploration |
| 120 | GOLD STORE 29   | <b>application</b> | 300 | Exploration |
| 121 | GOLD STORE 30   | <b>application</b> | 300 | Exploration |
| 122 | GOLD STORE 36   | <b>application</b> | 300 | Exploration |
| 123 | GOLD STORE 35   | <b>application</b> | 300 | Exploration |
| 124 | GOLD STORE 34   | <b>application</b> | 300 | Exploration |
| 125 | GOLD STORE 33   | <b>application</b> | 300 | Exploration |
| 126 | GOLD STORE 32   | <b>application</b> | 300 | Exploration |
| 127 | GOLD STORE 31   | <b>application</b> | 300 | Exploration |
| 128 | GOLD STORE 37   | <b>application</b> | 300 | Exploration |
| 129 | GOLD STORE 38   | <b>application</b> | 300 | Exploration |
| 130 | GOLD STORE 39   | <b>application</b> | 300 | Exploration |
| 131 | GOLD STORE 40   | <b>application</b> | 300 | Exploration |
| 132 | GOLD STORE 41   | <b>application</b> | 300 | Exploration |
| 133 | GOLD STORE 42   | <b>application</b> | 300 | Exploration |
| 134 | GOLD STORE 43   | <b>application</b> | 300 | Exploration |
| 135 | GOLD STORE 44   | <b>application</b> | 300 | Exploration |
| 136 | GOLD STORE 45   | <b>application</b> | 300 | Exploration |
| 137 | GOLD STORE 46   | <b>application</b> | 300 | Exploration |
| 138 | GOLD STORE 47   | <b>application</b> | 300 | Exploration |
| 139 | GOLD STORE 48   | <b>application</b> | 300 | Exploration |
| 140 | GOLD STORE 49   | <b>application</b> | 300 | Exploration |
| 141 | GOLD STORE 50   | <b>application</b> | 300 | Exploration |
| 142 | GOLD STORE 51   | <b>application</b> | 300 | Exploration |
| 143 | GOLD STORE 52   | <b>application</b> | 300 | Exploration |
| 144 | GOLD STORE 53   | <b>application</b> | 300 | Exploration |
| 145 | GOLD STORE 54   | <b>application</b> | 300 | Exploration |
| 146 | GOLD STORE 55   | <b>application</b> | 300 | Exploration |
| 147 | GOLD STORE 56   | <b>application</b> | 200 | Exploration |
| 148 | GOLD STORE 57   | <b>application</b> | 300 | Exploration |
| 149 | GOLD STORE 58   | <b>application</b> | 300 | Exploration |
| 150 | GOLD STORE 59   | <b>application</b> | 300 | Exploration |
| 151 | GOLD STORE 60   | <b>application</b> | 300 | Exploration |
| 152 | GOLD STORE 61   | <b>application</b> | 300 | Exploration |
| 153 | GOLD STORE 62   | <b>application</b> | 300 | Exploration |
| 154 | GOLD STORE 63   | <b>application</b> | 300 | Exploration |
| 155 | GOLD STORE 64   | <b>application</b> | 300 | Exploration |
| 156 | GOLD STORE 65   | <b>application</b> | 300 | Exploration |
| 157 | VACAS FLACAS 1  | <b>application</b> | 300 | Exploration |
| 158 | VACAS FLACAS 2  | <b>application</b> | 300 | Exploration |
| 159 | VACAS FLACAS 5  | <b>application</b> | 300 | Exploration |
| 160 | VACAS FLACAS 6  | <b>application</b> | 300 | Exploration |
| 161 | VACAS FLACAS 7  | <b>application</b> | 300 | Exploration |
| 162 | VACAS FLACAS 8  | <b>application</b> | 300 | Exploration |
| 163 | VACAS FLACAS 9  | <b>application</b> | 300 | Exploration |
| 164 | VACAS FLACAS 10 | <b>application</b> | 300 | Exploration |
| 165 | VACAS FLACAS 11 | <b>application</b> | 300 | Exploration |
| 166 | VACAS FLACAS 12 | <b>application</b> | 300 | Exploration |
| 167 | VACAS FLACAS 13 | <b>application</b> | 300 | Exploration |
| 168 | VACAS FLACAS 14 | <b>application</b> | 300 | Exploration |
| 169 | VACAS FLACAS 15 | <b>application</b> | 300 | Exploration |
| 170 | VACAS FLACAS 16 | <b>application</b> | 300 | Exploration |
| 171 | VACAS FLACAS 17 | <b>application</b> | 300 | Exploration |
| 172 | VACAS FLACAS 18 | <b>application</b> | 300 | Exploration |
| 173 | VACAS FLACAS 19 | <b>application</b> | 300 | Exploration |
| 174 | VACAS FLACAS 20 | <b>application</b> | 300 | Exploration |
| 175 | VACAS FLACAS 21 | <b>application</b> | 300 | Exploration |
| 176 | VACAS FLACAS 22 | <b>application</b> | 300 | Exploration |
| 177 | VACAS FLACAS 23 | <b>application</b> | 300 | Exploration |
| 178 | VACAS FLACAS 24 | <b>application</b> | 300 | Exploration |
| 179 | VACAS FLACAS 25 | <b>application</b> | 300 | Exploration |
| 180 | VACAS FLACAS 28 | <b>application</b> | 300 | Exploration |
| 181 | VACAS FLACAS 27 | <b>application</b> | 300 | Exploration |

|     |                      |                                    |     |              |
|-----|----------------------|------------------------------------|-----|--------------|
| 182 | VACAS FLACAS 26      | <b>application</b>                 | 300 | Exploration  |
| 183 | VACAS FLACAS 3       | <b>application</b>                 | 300 | Exploration  |
| 184 | VACAS FLACAS 4       | <b>application</b>                 | 300 | Exploration  |
| 189 | Bloody Good Shot 13A | <b>application</b>                 | 200 | Exploration  |
| 190 | Bloody Good Shot 12A | <b>application</b>                 | 200 | Exploration  |
| 191 | Bloody Good Shot 11A | <b>application</b>                 | 200 | Exploration  |
| 192 | Bloody Good Shot 10A | <b>application</b>                 | 300 | Exploration  |
| 193 | Bloody Good Shot 9A  | <b>application</b>                 | 300 | Exploration  |
| 194 | Bloody Good Shot 8A  | <b>application</b>                 | 200 | Exploration  |
| 195 | Bloody Good Shot 7A  | <b>application</b>                 | 100 | Exploration  |
| 196 | Bloody Good Shot 6A  | <b>application</b>                 | 200 | Exploration  |
| 197 | Bloody Good Shot 5A  | <b>application</b>                 | 200 | Exploration  |
| 198 | Bloody Good Shot 4A  | <b>application</b>                 | 300 | Exploration  |
| 199 | Bloody Good Shot 3A  | <b>application</b>                 | 300 | Exploration  |
| 200 | Bloody Good Shot 2A  | <b>application</b>                 | 300 | Exploration  |
| 201 | Bloody Good Shot 1A  | <b>application</b>                 | 300 | Exploration  |
| 202 | NICE BARREL 1        | <b>application</b>                 | 200 | Exploration  |
| 203 | NICE BARREL 2        | <b>application</b>                 | 300 | Exploration  |
| 204 | NICE BARREL 3        | <b>application</b>                 | 200 | Exploration  |
| 205 | NICE BARREL 4        | <b>application</b>                 | 200 | Exploration  |
| 206 | NICE BARREL 5        | <b>application</b>                 | 200 | Exploration  |
| 207 | NICE BARREL 6        | <b>application</b>                 | 200 | Exploration  |
| 208 | NICE BARREL 7        | <b>application</b>                 | 200 | Exploration  |
| 209 | ZORRO 1A             | <b>16/Mar/2022</b>                 | 200 | Exploration  |
| 210 | ZORRO 2A             | <b>16/Mar/2022</b>                 | 200 | Exploration  |
| 211 | ZORRO 3A             | <b>16/Mar/2022</b>                 | 200 | Exploration  |
| 213 | ZORRO 4A             | <b>16/Mar/2022</b>                 | 100 | Exploration  |
| 213 | ZORRO 5A             | <b>16/Mar/2022</b>                 | 200 | Exploration  |
| 214 | ZORRO 6A             | <b>29/Apr/2022</b>                 | 200 | Exploration  |
| 215 | Bloody Good Shot 11  | <b>22/Oct/2020</b>                 | 200 | Exploration  |
| 216 | Bloody Good Shot 12  | <b>22/Oct/2020</b>                 | 200 | Exploration  |
| 217 | Bloody Good Shot 13  | <b>22/Oct/2020</b>                 | 200 | Exploration  |
| 218 | Punta de Diamante 1  | <b>14/Feb/2021</b>                 | 200 | Exploration  |
| 219 | Punta de Diamante 2  | <b>14/Feb/2021</b>                 | 300 | Exploration  |
| 220 | Punta de Diamante 3  | <b>14/Feb/2021</b>                 | 300 | Exploration  |
| 221 | La Negra Coja 19     | <b>14/Feb/2021</b>                 | 200 | Exploration  |
| 222 | La Negra Coja 18     | <b>14/Feb/2021</b>                 | 300 | Exploration  |
| 223 | La Negra Coja 17     | <b>14/Feb/2021</b>                 | 300 | Exploration  |
| 224 | La Negra Coja 16     | <b>18/Feb/2021</b>                 | 200 | Exploration  |
| 225 | La Negra Coja 15     | <b>18/Feb/2021</b>                 | 300 | Exploration  |
| 226 | La Negra Coja 14     | <b>20/Feb/2021</b>                 | 300 | Exploration  |
| 227 | La Negra Coja 13     | <b>20/Feb/2021</b>                 | 300 | Exploration  |
| 228 | La Negra Coja 12     | <b>20/Feb/2021</b>                 | 200 | Exploration  |
| 229 | La Negra Coja 11     | <b>20/Feb/2021</b>                 | 300 | Exploration  |
| 230 | La Negra Coja 10     | <b>20/Feb/2021</b>                 | 300 | Exploration  |
| 231 | La Negra Coja 9      | <b>22/Feb/2021</b>                 | 200 | Exploration  |
| 232 | La Negra Coja 8      | <b>22/Feb/2021</b>                 | 300 | Exploration  |
| 233 | La Negra Coja 7      | <b>22/Feb/2021</b>                 | 300 | Exploration  |
| 234 | La Negra Coja 6      | <b>22/Feb/2021</b>                 | 200 | Exploration  |
| 235 | La Negra Coja 5      | <b>1/Mar/2021</b>                  | 300 | Exploration  |
| 236 | La Negra Coja 4      | <b>1/Mar/2021</b>                  | 200 | Exploration  |
| 237 | La Negra Coja 3      | <b>5/Mar/2021</b>                  | 300 | Exploration  |
| 238 | La Negra Coja 2      | <b>5/Mar/2021</b>                  | 300 | Exploration  |
| 239 | La Negra Coja 1      | <b>7/Mar/2021</b>                  | 200 | Exploration  |
| 185 | Buzzard 1, 1 al 300  | <b>Converting from exploration</b> | 300 | Exploitation |
| 186 | Buzzard 2, 1 al 300  | <b>Converting from exploration</b> | 300 | Exploitation |
| 187 | Buzzard 3, 1 al 300  | <b>Converting from exploration</b> | 300 | Exploitation |
| 188 | Buzzard 4, 1 al 300  | <b>Converting from exploration</b> | 300 | Exploitation |
| 240 | LEON DOS 1-30        | <b>NA - constituted</b>            | 300 | Exploitation |
| 241 | LEON UNO 1-30        | <b>NA - constituted</b>            | 300 | Exploitation |
| 242 | LAS COQUETAS 1/10    | <b>NA - constituted</b>            | 100 | Exploitation |
| 243 | PATON DOS 1/29       | <b>NA - constituted</b>            | 230 | Exploitation |
| 244 | PATON UNO 1/29       | <b>NA - constituted</b>            | 240 | Exploitation |

Notes:

1. All concessions noted as "application" are moving through the application process and there is no legal impediment to them being granted, as announced on 23 September 2020.
2. Constituted exploitation concessions have no expiry.
3. Buzzard concession are currently being converted from Exploration to exploitation.